

**OBSERVATORI  
METEOROLÒGIC**

**DE  
ARBÚCIES**

Coordenades UTM  
X=458565.7  
Y=4629695.7  
Fus=31



**TEMPERATURES  
°C**

MES DE  
**MAIG**

ANY  
**2021**



[info@meteoguilleries.cat](mailto:info@meteoguilleries.cat)

[www.meteoguilleries.cat](http://www.meteoguilleries.cat)

Dia	00:00	04:00	08:00	12:00	16:00	20:00
-----	-------	-------	-------	-------	-------	-------

1	11.4°	10.4°	11.3°	12.5°	11.8°	10.3°
2	9.7°	8.6°	13.1°	13.4°	11.0°	7.1°
3	5.5°	8.1°	17.0°	16.9°	13.4°	7.0°
4	8.1°	11.9°	19.8°	20.4°	15.4°	10.4°
5	9.5°	12.4°	19.3°	18.2°	15.6°	10.2°
6	8.5°	10.7°	21.4°	25.8°	19.6°	13.0°
7	11.6°	14.5°	19.5°	17.4°	15.9°	12.0°
8	10.1°	12.9°	23.9°	26.9°	21.6°	13.1°
9	10.9°	12.3°	20.3°	21.4°	19.9°	17.6°
10	13.6°	12.8°	15.5°	17.2°	16.2°	11.8°

<b>Suma</b>	<b>98.8°</b>	<b>114.7°</b>	<b>180.9°</b>	<b>190.0°</b>	<b>160.3°</b>	<b>112.6°</b>
-------------	--------------	---------------	---------------	---------------	---------------	---------------

11	12.2°	11.8°	17.1°	12.7°	11.0°	6.7°
12	5.9°	8.8°	18.4°	21.3°	17.7°	11.2°
13	8.6°	9.5°	16.6°	19.3°	18.0°	13.7°
14	10.7°	11.6°	15.3°	16.2°	12.4°	10.6°
15	7.9°	8.9°	18.1°	25.4°	19.9°	13.4°
16	11.5°	13.2°	20.4°	21.9°	17.3°	14.2°
17	11.7°	13.3°	17.0°	18.3°	15.4°	11.2°
18	9.5°	11.1°	18.6°	22.2°	20.6°	15.4°
19	13.7°	13.0°	18.5°	17.1°	13.3°	12.1°
20	10.7°	11.9°	17.7°	20.3°	17.8°	11.8°

<b>Suma</b>	<b>102.3°</b>	<b>113.1°</b>	<b>177.6°</b>	<b>194.7°</b>	<b>163.4°</b>	<b>120.4°</b>
-------------	---------------	---------------	---------------	---------------	---------------	---------------

21	9.9°	12.6°	22.7°	24.0°	19.4°	14.3°
22	14.2°	13.8°	18.8°	21.3°	15.9°	11.1°
23	9.3°	11.2°	17.0°	17.6°	14.8°	12.3°
24	11.2°	12.5°	19.7°	22.0°	16.1°	13.5°
25	10.4°	12.2°	15.6°	18.8°	13.9°	12.1°
26	9.3°	12.0°	19.2°	20.7°	17.7°	12.7°
27	11.8°	15.3°	22.9°	23.4°	19.6°	15.7°
28	13.8°	15.8°	24.0°	24.4°	21.6°	15.7°
29	14.4°	17.8°	27.0°	27.0°	20.4°	16.4°
30	15.2°	16.2°	23.2°	24.7°	17.4°	15.1°
31	13.9°	15.9°	22.5°	23.3°	20.2°	14.0°

<b>Suma</b>	<b>133.2°</b>	<b>155.1°</b>	<b>232.5°</b>	<b>247.3°</b>	<b>197.1°</b>	<b>152.9°</b>
-------------	---------------	---------------	---------------	---------------	---------------	---------------

<b>Total</b>	<b>334.3°</b>	<b>383.0°</b>	<b>591.1°</b>	<b>632.1°</b>	<b>520.8°</b>	<b>385.9°</b>
<b>Mit</b>	<b>10.8°</b>	<b>12.4°</b>	<b>19.1°</b>	<b>20.4°</b>	<b>16.8°</b>	<b>12.4°</b>

Màxima	Hora	Mínima	Hora	Oscil·lació	Mitjana
--------	------	--------	------	-------------	---------

<b>13.0°</b>	14:00	<b>10.1°</b>	20:45	2.9°	11.3°
<b>14.4°</b>	12:55	<b>5.4°</b>	23:45	9.0°	10.5°
<b>18.1°</b>	10:50	<b>4.3°</b>	04:35	13.8°	11.3°
<b>21.6°</b>	11:25	<b>6.0°</b>	00:50	15.6°	14.3°
<b>21.0°</b>	10:50	<b>8.6°</b>	03:25	12.4°	14.2°
<b>26.5°</b>	14:00	<b>7.6°</b>	04:10	18.9°	16.5°
<b>20.4°</b>	10:30	<b>10.8°</b>	23:20	9.6°	15.2°
<b>28.8°</b>	13:10	<b>9.4°</b>	03:40	19.4°	18.1°
<b>23.0°</b>	15:05	<b>9.2°</b>	05:00	13.8°	17.1°
<b>20.1°</b>	15:45	<b>10.6°</b>	22:50	9.5°	14.5°

<b>206.9°</b>	<b>82.0°</b>	<b>124.9°</b>	<b>143.0°</b>
---------------	--------------	---------------	---------------

<b>19.0°</b>	11:30	<b>5.9°</b>	23:40	13.1°	11.9°
<b>22.1°</b>	15:40	<b>5.5°</b>	01:05	16.6°	13.9°
<b>21.0°</b>	15:20	<b>7.6°</b>	04:50	13.4°	14.3°
<b>18.9°</b>	11:55	<b>9.0°</b>	23:50	9.9°	12.8°
<b>26.4°</b>	14:20	<b>7.1°</b>	04:20	19.3°	15.6°
<b>23.0°</b>	13:55	<b>11.1°</b>	03:25	11.9°	16.4°
<b>19.7°</b>	13:00	<b>9.4°</b>	23:35	10.3°	14.5°
<b>23.8°</b>	16:40	<b>8.9°</b>	00:40	14.9°	16.2°
<b>20.3°</b>	11:05	<b>11.2°</b>	23:25	9.1°	14.6°
<b>21.7°</b>	15:00	<b>9.1°</b>	04:10	12.6°	15.0°

<b>215.9°</b>	<b>84.8°</b>	<b>131.1°</b>	<b>145.2°</b>
---------------	--------------	---------------	---------------

<b>25.6°</b>	11:10	<b>9.5°</b>	01:55	16.1°	17.1°
<b>23.4°</b>	13:25	<b>9.8°</b>	23:55	13.6°	15.9°
<b>18.8°</b>	11:55	<b>8.2°</b>	04:15	10.6°	13.7°
<b>23.9°</b>	14:35	<b>10.6°</b>	23:45	13.3°	15.8°
<b>20.5°</b>	13:45	<b>9.4°</b>	01:25	11.1°	13.8°
<b>21.4°</b>	12:50	<b>7.6°</b>	04:35	13.8°	15.2°
<b>25.4°</b>	11:20	<b>10.9°</b>	03:30	14.5°	18.1°
<b>25.7°</b>	11:30	<b>13.0°</b>	02:50	12.7°	19.2°
<b>29.0°</b>	12:40	<b>13.6°</b>	03:10	15.4°	20.5°
<b>26.0°</b>	12:55	<b>14.1°</b>	00:10	11.9°	18.6°
<b>24.3°</b>	11:50	<b>12.2°</b>	04:35	12.1°	18.3°

<b>264.0°</b>	<b>118.9°</b>	<b>145.1°</b>	<b>186.2°</b>
---------------	---------------	---------------	---------------

<b>686.8°</b>	<b>285.7°</b>	<b>401.1°</b>	<b>474.4°</b>
<b>22.2°</b>	<b>9.2°</b>	<b>12.9°</b>	<b>15.3°</b>

**OBSERVATORI  
METEOROLÒGIC**

**DE**

**ARBÚCIES**

Coordenades UTM

X=458565.7

Y=4629695.7

Fus=31



**TEMPERATURES  
°C**

MES DE  
**MAIG**

ANY  
**2021**



meteoguilleries.cat

info@meteoguilleries.cat

www.meteoguilleries.cat

Dia	0:00	1:00	2:00	3:00	4:00	5:00	6:00	7:00	8:00	9:00	10:00	11:00	12:00	13:00	14:00	15:00	16:00	17:00	18:00	19:00	20:00	21:00	22:00	23:00	Mit	
1	12.0°	11.5°	11.0°	11.0°	10.5°	10.2°	10.3°	10.7°	10.8°	11.2°	11.2°	11.9°	12.4°	12.5°	12.5°	12.4°	12.2°	12.1°	11.6°	11.3°	10.6°	10.2°	10.3°	10.3°	11.3°	
2	10.2°	9.9°	9.4°	9.2°	8.3°	7.4°	8.6°	10.1°	11.9°	13.4°	13.7°	13.3°	13.2°	13.9°	13.7°	12.8°	11.9°	11.7°	11.1°	9.1°	8.4°	7.2°	6.7°	5.9°	10.5°	
3	5.6°	5.3°	5.4°	5.8°	4.6°	5.4°	8.8°	13.5°	15.5°	17.0°	17.6°	17.7°	17.4°	17.3°	16.2°	16.5°	16.4°	15.0°	12.5°	9.5°	7.7°	7.3°	6.6°	6.5°	11.3°	
4	6.3°	6.9°	9.3°	9.8°	9.0°	9.5°	13.0°	16.1°	17.7°	19.5°	20.8°	21.1°	21.0°	20.3°	20.3°	19.9°	18.1°	17.0°	14.7°	11.9°	10.4°	9.8°	10.7°	10.9°	14.3°	
5	9.6°	9.6°	9.9°	8.8°	9.3°	9.8°	13.6°	16.9°	18.3°	19.3°	20.2°	19.4°	18.3°	18.7°	18.1°	17.6°	16.9°	16.3°	15.6°	13.6°	11.4°	10.4°	9.8°	9.2°	14.2°	
6	8.8°	8.6°	8.5°	8.0°	7.8°	8.3°	11.5°	15.2°	17.8°	20.0°	23.3°	24.3°	25.3°	25.7°	26.2°	26.3°	22.6°	20.9°	18.7°	16.0°	14.4°	13.4°	12.4°	12.0°	16.5°	
7	11.7°	11.4°	11.4°	11.8°	11.8°	12.5°	15.3°	18.5°	19.2°	19.9°	19.8°	19.0°	18.8°	18.2°	16.6°	16.2°	16.5°	16.4°	15.9°	14.8°	13.3°	12.2°	11.5°	11.0°	15.1°	
8	10.6°	10.3°	9.8°	9.5°	9.9°	10.7°	13.6°	17.6°	20.6°	23.0°	25.3°	26.5°	28.1°	27.6°	25.8°	26.1°	26.4°	23.9°	19.6°	16.7°	14.5°	13.4°	12.7°	11.7°	18.1°	
9	11.3°	11.0°	11.1°	10.3°	9.8°	10.1°	13.2°	16.3°	18.8°	20.2°	20.8°	21.7°	21.1°	20.9°	21.3°	22.3°	21.8°	20.6°	19.2°	17.9°	16.5°	20.0°	18.5°	15.6°	17.1°	
10	15.0°	13.9°	13.1°	12.5°	12.2°	12.3°	13.0°	13.8°	14.6°	15.2°	16.1°	16.0°	15.8°	15.9°	18.1°	19.1°	17.9°	17.4°	15.2°	14.3°	12.9°	11.8°	11.0°	11.6°	14.5°	
11	13.1°	13.2°	12.6°	9.9°	8.1°	10.0°	14.3°	14.7°	15.3°	16.9°	17.7°	18.4°	17.1°	11.9°	10.6°	11.1°	12.7°	12.3°	10.5°	8.5°	7.3°	6.9°	6.6°	6.0°	11.9°	
12	5.9°	5.6°	5.9°	6.2°	6.0°	6.4°	10.1°	12.8°	15.7°	18.6°	19.5°	19.6°	20.7°	21.1°	21.5°	21.8°	21.5°	19.0°	16.3°	14.1°	12.6°	11.7°	10.8°	9.7°	13.9°	
13	8.9°	8.6°	8.5°	8.1°	7.8°	8.2°	10.1°	12.1°	14.6°	16.1°	17.6°	18.2°	18.6°	19.2°	19.6°	20.0°	20.0°	19.3°	17.5°	15.3°	15.8°	13.8°	12.9°	12.4°	14.3°	
14	11.4°	10.1°	10.3°	11.0°	10.9°	11.2°	12.3°	11.9°	12.7°	14.3°	16.4°	17.9°	17.5°	17.5°	15.8°	14.1°	12.9°	12.6°	12.2°	11.9°	11.8°	11.2°	10.1°	9.4°	12.8°	
15	8.4°	7.9°	7.8°	7.6°	7.3°	8.3°	9.7°	10.2°	13.1°	16.8°	19.9°	22.7°	24.5°	25.5°	26.2°	25.5°	24.5°	21.1°	18.0°	16.0°	15.2°	13.7°	12.9°	12.0°	15.6°	
16	11.7°	11.6°	11.4°	11.3°	11.3°	12.1°	13.5°	15.9°	18.6°	19.8°	21.4°	21.6°	22.3°	22.6°	22.5°	20.2°	19.0°	18.1°	16.9°	15.4°	15.5°	14.7°	13.9°	12.8°	16.4°	
17	12.3°	11.6°	11.5°	11.5°	12.1°	12.9°	13.5°	14.6°	15.5°	16.7°	17.6°	18.3°	18.5°	18.7°	18.2°	17.9°	17.3°	15.7°	14.6°	13.9°	13.0°	11.6°	10.7°	9.6°	14.5°	
18	9.1°	9.1°	9.8°	9.9°	9.2°	9.8°	11.1°	14.5°	17.6°	18.6°	18.8°	19.4°	20.9°	22.0°	23.1°	22.7°	23.3°	21.3°	19.9°	17.8°	16.6°	16.0°	14.9°	14.3°	16.2°	
19	14.0°	13.8°	13.6°	13.3°	12.9°	12.3°	12.8°	14.3°	16.6°	18.0°	19.6°	19.6°	19.0°	18.1°	16.3°	14.9°	13.5°	13.1°	13.3°	13.3°	13.0°	12.5°	11.6°	11.4°	14.6°	
20	11.0°	10.7°	10.8°	10.2°	9.3°	10.8°	13.5°	14.0°	16.0°	17.2°	18.2°	19.2°	19.8°	19.8°	21.0°	20.8°	19.9°	19.4°	17.2°	14.6°	13.1°	12.2°	11.4°	10.7°	15.0°	
21	10.1°	9.7°	9.8°	9.9°	9.7°	10.6°	13.6°	16.5°	19.4°	22.7°	23.9°	24.8°	24.2°	23.8°	23.8°	24.4°	22.6°	20.6°	18.4°	15.9°	14.4°	14.0°	14.0°	15.0°	17.1°	
22	15.3°	14.6°	13.9°	13.0°	12.2°	12.9°	14.6°	15.6°	16.4°	18.2°	19.8°	21.0°	22.2°	22.8°	20.9°	19.4°	17.1°	16.4°	16.2°	13.8°	12.2°	11.4°	10.7°	10.2°	15.9°	
23	9.8°	9.1°	9.4°	8.9°	8.3°	9.8°	12.6°	14.1°	16.4°	16.7°	18.1°	18.4°	17.8°	17.4°	16.9°	16.0°	15.2°	14.3°	13.6°	13.2°	12.6°	11.9°	11.5°	13.7°		
24	11.3°	11.3°	11.1°	11.1°	11.0°	11.1°	12.5°	15.4°	17.6°	19.2°	20.1°	21.7°	22.4°	22.2°	22.7°	20.9°	17.1°	16.3°	15.7°	15.4°	15.1°	14.7°	13.1°	11.0°	15.8°	
25	10.0°	9.7°	10.7°	11.2°	11.3°	11.5°	12.0°	13.9°	14.0°	14.6°	16.2°	17.6°	19.0°	20.1°	19.3°	16.8°	15.1°	14.1°	13.4°	13.2°	13.0°	12.9°	12.2°	10.3°	13.8°	
26	9.5°	10.0°	9.2°	8.4°	7.8°	9.4°	13.6°	17.1°	18.1°	18.5°	19.5°	20.6°	21.0°	20.8°	20.4°	20.5°	20.4°	18.7°	16.9°	14.7°	13.1°	12.5°	12.8°	12.3°	15.2°	
27	12.4°	12.0°	11.3°	11.4°	11.7°	13.3°	16.5°	19.5°	21.2°	22.6°	23.7°	24.2°	23.6°	24.0°	23.5°	22.6°	21.0°	20.7°	19.4°	17.5°	16.6°	15.9°	15.3°	14.8°	18.1°	
28	14.1°	13.8°	13.5°	13.7°	13.9°	13.9°	15.9°	19.3°	22.2°	24.2°	24.5°	25.0°	24.0°	25.0°	24.7°	24.0°	23.1°	22.3°	21.3°	19.8°	17.3°	15.6°	15.2°	14.8°	19.2°	
29	14.2°	14.8°	14.2°	14.2°	14.0°	15.2°	18.8°	23.1°	25.8°	26.7°	27.2°	28.2°	28.6°	27.9°	26.1°	25.6°	23.5°	21.1°	19.0°	17.9°	18.1°	16.6°	16.3°	14.8°	20.5°	
30	14.7°	15.1°	15.6°	15.5°	15.0°	15.3°	16.1°	18.1°	21.2°	22.3°	24.1°	25.0°	25.3°	25.7°	24.4°	23.2°	21.2°	16.8°	16.2°	15.5°	15.2°	15.0°	15.1°	15.0°	18.6°	
31	14.3°	14.1°	14.0°	13.1°	12.4°	13.6°	17.2°	20.3°	20.9°	22.5°	23.1°	23.5°	23.7°	22.9°	23.2°	23.5°	22.8°	21.4°	19.6°	17.0°	15.3°	14.4°	13.6°	12.8°	18.3°	
<b>Total</b>	<b>342.5°</b>	<b>334.6°</b>	<b>333.8°</b>	<b>326.1°</b>	<b>315.2°</b>	<b>334.9°</b>	<b>405.1°</b>	<b>476.7°</b>	<b>534.3°</b>	<b>580.1°</b>	<b>614.3°</b>	<b>635.6°</b>	<b>642.6°</b>	<b>640.2°</b>	<b>629.7°</b>	<b>615.8°</b>	<b>585.0°</b>	<b>547.0°</b>	<b>501.0°</b>	<b>450.2°</b>	<b>417.2°</b>	<b>395.4°</b>	<b>375.8°</b>	<b>355.2°</b>	<b>474.5°</b>	
<b>Mit</b>	<b>11.0°</b>	<b>10.8°</b>	<b>10.8°</b>	<b>10.5°</b>	<b>10.2°</b>	<b>10.8°</b>	<b>13.1°</b>	<b>15.4°</b>	<b>17.2°</b>	<b>18.7°</b>	<b>19.8°</b>	<b>20.5°</b>	<b>20.7°</b>	<b>20.7°</b>	<b>20.3°</b>	<b>19.9°</b>	<b>18.9°</b>	<b>17.6°</b>	<b>16.2°</b>	<b>14.5°</b>	<b>13.5°</b>	<b>12.8°</b>	<b>12.1°</b>	<b>11.5°</b>	<b>15.3°</b>	
<b>Màx.</b>	<b>15.3°</b>	<b>15.1°</b>	<b>15.6°</b>	<b>15.5°</b>	<b>15.0°</b>	<b>15.3°</b>	<b>18.8°</b>	<b>23.1°</b>	<b>25.8°</b>	<b>26.7°</b>	<b>27.2°</b>	<b>28.2°</b>	<b>28.6°</b>	<b>27.9°</b>	<b>26.2°</b>	<b>26.3°</b>	<b>26.4°</b>	<b>23.9°</b>	<b>21.3°</b>	<b>19.8°</b>	<b>18.1°</b>	<b>20.0°</b>	<b>18.5°</b>	<b>15.6°</b>	<b>20.5°</b>	
<b>Dia</b>	<b>22</b>	<b>30</b>	<b>30</b>	<b>30</b>	<b>30</b>	<b>30</b>	<b>29</b>	<b>29</b>	<b>29</b>	<b>29</b>	<b>29</b>	<b>29</b>	<b>29</b>	<b>29</b>	<b>6</b>	<b>6</b>	<b>8</b>	<b>8</b>	<b>28</b>	<b>28</b>	<b>29</b>	<b>9</b>	<b>9</b>	<b>9</b>	<b>29</b>	
<b>Mín.</b>	<b>5.6°</b>	<b>5.3°</b>	<b>5.4°</b>	<b>5.8°</b>	<b>4.6°</b>	<b>5.4°</b>	<b>8.6°</b>	<b>10.1°</b>	<b>10.8°</b>	<b>11.2°</b>	<b>11.2°</b>	<b>11.9°</b>	<b>12.4°</b>	<b>11.9°</b>	<b>10.6°</b>	<b>11.1°</b>	<b>11.9°</b>	<b>11.7°</b>	<b>10.5°</b>	<b>8.5°</b>	<b>7.3°</b>	<b>6.9°</b>	<b>6.6°</b>	<b>5.9°</b>	<b>10.5°</b>	
<b>Dia</b>	<b>3</b>	<b>3</b>	<b>3</b>	<b>3</b>	<b>3</b>	<b>3</b>	<b>2</b>	<b>2</b>	<b>1</b>	<b>1</b>	<b>1</b>	<b>1</b>	<b>1</b>	<b>1</b>	<b>11</b>	<b>11</b>	<b>11</b>	<b>2</b>	<b>2</b>	<b>11</b>	<b>11</b>	<b>11</b>	<b>11</b>	<b>11</b>	<b>2</b>	<b>2</b>

**OBSERVATORI  
METEOROLÒGIC**

**DE  
ARBÚCIES**

Coordenades UTM  
X=458565.7  
Y=4629695.7  
Fus=31



**PRESSIÓ  
HPA.  
HUMITAT  
%**

**MES DE  
MAIG**

**ANY  
2021**



[info@meteoguilleries.cat](mailto:info@meteoguilleries.cat)

[www.meteoguilleries.cat](http://www.meteoguilleries.cat)

Dia	00:00	04:00	08:00	12:00	16:00	20:00	Mitjana
<b>PRESSIÓ</b>							
1	1010.1	1009.1	1009.9	1010.5	1013.1	1017.1	<b>1011.6</b>
2	1017.7	1018.4	1019.2	1020.0	1020.8	1022.2	<b>1019.7</b>
3	1022.5	1023.0	1022.1	1021.1	1020.3	1021.7	<b>1021.8</b>
4	1020.0	1018.3	1017.3	1015.6	1015.4	1016.6	<b>1017.2</b>
5	1015.3	1015.4	1016.1	1016.3	1016.6	1018.9	<b>1016.4</b>
6	1017.9	1017.0	1015.2	1012.9	1014.2	1017.1	<b>1015.7</b>
7	1016.1	1016.9	1018.2	1018.7	1019.3	1021.0	<b>1018.4</b>
8	1020.0	1019.1	1017.6	1015.4	1015.1	1016.0	<b>1017.2</b>
9	1014.7	1013.8	1011.8	1008.7	1007.4	1008.5	<b>1010.8</b>
10	1008.9	1009.5	1010.1	1009.1	1008.4	1009.9	<b>1009.3</b>
<b>Suma</b>	<b>10163.2</b>	<b>10160.4</b>	<b>10157.5</b>	<b>10148.2</b>	<b>10150.8</b>	<b>10169.1</b>	<b>10158.2</b>
11	1009.7	1010.4	1012.5	1015.6	1017.9	1019.8	<b>1014.3</b>
12	1018.5	1016.4	1013.4	1010.9	1012.5	1015.3	<b>1014.5</b>
13	1014.9	1014.8	1013.8	1011.5	1009.6	1011.0	<b>1012.6</b>
14	1011.4	1012.3	1013.1	1014.6	1016.4	1017.6	<b>1014.2</b>
15	1016.1	1014.7	1012.8	1010.4	1011.4	1013.0	<b>1013.1</b>
16	1011.7	1011.1	1011.1	1011.3	1012.4	1014.2	<b>1012.0</b>
17	1014.9	1016.8	1018.0	1018.2	1019.3	1021.7	<b>1018.1</b>
18	1021.6	1020.5	1018.3	1014.6	1015.3	1019.4	<b>1018.3</b>
19	1019.9	1021.5	1021.5	1021.8	1023.3	1024.9	<b>1022.1</b>
20	1024.4	1024.7	1023.9	1021.8	1020.8	1022.1	<b>1023.0</b>
<b>Suma</b>	<b>10163.1</b>	<b>10163.1</b>	<b>10158.4</b>	<b>10150.6</b>	<b>10158.9</b>	<b>10179.0</b>	<b>10162.2</b>
21	1020.0	1017.9	1015.6	1013.1	1012.3	1014.4	<b>1015.5</b>
22	1014.1	1014.6	1014.6	1014.3	1016.1	1018.6	<b>1015.4</b>
23	1018.7	1019.4	1019.6	1018.7	1018.0	1018.0	<b>1018.7</b>
24	1016.7	1016.9	1017.0	1017.2	1020.6	1023.3	<b>1018.6</b>
25	1024.1	1025.3	1026.0	1024.3	1024.7	1025.2	<b>1024.9</b>
26	1023.6	1022.8	1021.1	1019.1	1018.6	1019.9	<b>1020.9</b>
27	1018.7	1018.9	1018.7	1017.3	1017.7	1018.7	<b>1018.3</b>
28	1018.4	1018.3	1018.2	1017.7	1018.0	1020.0	<b>1018.4</b>
29	1019.3	1019.4	1019.2	1019.1	1019.7	1020.7	<b>1019.5</b>
30	1020.0	1019.9	1019.5	1018.0	1019.8	1019.7	<b>1019.5</b>
31	1018.0	1017.6	1017.7	1017.0	1016.6	1017.4	<b>1017.4</b>
<b>Suma</b>	<b>11211.5</b>	<b>11210.9</b>	<b>11207.3</b>	<b>11195.9</b>	<b>11202.1</b>	<b>11215.8</b>	<b>11207.3</b>
<b>Total</b>	<b>31537.9</b>	<b>31534.5</b>	<b>31523.1</b>	<b>31494.6</b>	<b>31511.7</b>	<b>31563.9</b>	<b>31527.6</b>
<b>Mit</b>	<b>1017.4</b>	<b>1017.2</b>	<b>1016.9</b>	<b>1016.0</b>	<b>1016.5</b>	<b>1018.2</b>	<b>1017.0</b>

Dia	00:00	04:00	08:00	12:00	16:00	20:00	Mitjana
<b>HUMITAT</b>							
1	90.8	94.7	95.1	91.7	91.4	95.0	<b>93.1</b>
2	95.5	95.3	69.0	61.9	72.2	83.6	<b>79.6</b>
3	86.6	75.2	39.2	47.8	57.4	85.5	<b>65.3</b>
4	79.5	65.0	39.2	40.8	61.2	84.0	<b>61.6</b>
5	87.5	79.6	49.9	53.9	67.8	90.1	<b>71.5</b>
6	93.0	86.0	46.9	26.1	64.3	79.9	<b>66.0</b>
7	83.8	73.9	57.9	73.8	82.9	93.2	<b>77.6</b>
8	95.0	89.9	45.9	33.3	47.7	77.7	<b>64.9</b>
9	80.8	82.5	56.9	56.0	67.2	70.0	<b>68.9</b>
10	92.6	95.3	93.8	81.0	71.8	88.3	<b>87.1</b>
<b>Suma</b>	<b>885.0</b>	<b>837.3</b>	<b>593.9</b>	<b>566.4</b>	<b>684.0</b>	<b>847.3</b>	<b>735.7</b>
11	67.4	69.4	50.3	78.5	81.8	92.8	<b>73.4</b>
12	93.2	81.7	37.6	29.7	47.2	79.8	<b>61.5</b>
13	90.5	89.0	58.2	40.3	39.4	63.6	<b>63.5</b>
14	79.6	83.1	74.5	62.7	90.8	94.2	<b>80.8</b>
15	94.9	94.9	58.9	31.1	49.8	75.5	<b>67.5</b>
16	79.9	75.7	52.9	52.4	67.5	79.8	<b>68.0</b>
17	89.9	81.9	61.4	59.3	69.9	86.7	<b>74.8</b>
18	89.9	86.5	59.1	46.7	56.6	76.8	<b>69.3</b>
19	83.1	79.4	50.4	63.2	87.4	88.7	<b>75.4</b>
20	90.0	84.1	61.9	49.0	61.3	84.8	<b>71.9</b>
<b>Suma</b>	<b>858.6</b>	<b>825.6</b>	<b>565.4</b>	<b>512.7</b>	<b>651.6</b>	<b>822.7</b>	<b>706.1</b>
21	91.9	84.7	42.5	43.6	59.0	78.4	<b>66.7</b>
22	73.7	78.8	57.5	45.1	63.6	72.7	<b>65.2</b>
23	80.5	77.7	54.2	54.1	66.8	79.7	<b>68.8</b>
24	87.7	86.6	52.9	45.8	64.2	72.2	<b>68.3</b>
25	84.0	81.3	59.6	51.8	73.5	81.6	<b>72.0</b>
26	81.1	69.6	46.0	50.6	64.7	85.8	<b>66.3</b>
27	85.1	74.0	45.1	49.1	65.3	81.7	<b>66.7</b>
28	75.6	69.4	43.0	43.7	52.1	77.7	<b>60.3</b>
29	80.3	67.0	31.8	33.3	70.0	84.6	<b>61.2</b>
30	86.9	91.5	49.3	38.0	79.9	93.3	<b>73.1</b>
31	93.0	82.1	54.9	53.6	60.3	83.3	<b>71.2</b>
<b>Suma</b>	<b>919.8</b>	<b>862.7</b>	<b>536.7</b>	<b>508.6</b>	<b>719.3</b>	<b>891.0</b>	<b>739.7</b>
<b>Total</b>	<b>2663.3</b>	<b>2525.6</b>	<b>1696.0</b>	<b>1587.7</b>	<b>2054.9</b>	<b>2561.0</b>	<b>2181.4</b>
<b>Mit</b>	<b>85.9</b>	<b>81.5</b>	<b>54.7</b>	<b>51.2</b>	<b>66.3</b>	<b>82.6</b>	<b>70.4</b>

**OBSERVATORI  
METEOROLÒGIC  
DE  
ARBÚCIES**

Coordenades UTM  
X=458565.7  
Y=4629695.7  
Fus=31



**PRESSIÓ  
HPA.**

MES DE  
MAIG

ANY  
2021



meteoguilleries.cat

info@meteoguilleries.cat

www.meteoguilleries.cat

Dia	0:00	1:00	2:00	3:00	4:00	5:00	6:00	7:00	8:00	9:00	10:00	11:00	12:00	13:00	14:00	15:00	16:00	17:00	18:00	19:00	20:00	21:00	22:00	23:00	Mit
1	1010.8	1010.2	1010.0	1009.4	1009.1	1009.2	1009.1	1009.0	1009.5	1009.9	1009.9	1010.1	1010.1	1010.2	1010.5	1011.1	1011.8	1012.3	1013.6	1014.9	1015.9	1016.9	1017.5	1018.0	1011.6
2	1018.1	1018.0	1017.3	1017.3	1017.8	1018.1	1018.8	1019.0	1019.2	1019.2	1019.2	1019.4	1019.9	1019.8	1019.9	1020.3	1020.5	1020.7	1020.9	1021.3	1022.0	1022.0	1022.2	1022.8	1019.7
3	1022.8	1022.8	1022.3	1022.2	1022.6	1023.0	1023.2	1023.3	1022.6	1022.2	1021.9	1021.7	1021.7	1021.5	1020.9	1020.2	1020.1	1020.1	1020.1	1021.1	1021.3	1021.7	1022.0	1022.0	1021.8
4	1021.1	1020.1	1019.8	1019.0	1018.4	1018.3	1018.2	1018.2	1018.0	1017.7	1017.1	1016.6	1016.1	1016.0	1015.2	1015.0	1015.1	1015.0	1015.3	1016.2	1016.7	1017.1	1016.4	1016.1	1017.2
5	1015.8	1015.3	1015.1	1015.0	1015.2	1015.8	1015.2	1015.4	1016.0	1016.0	1016.1	1016.2	1016.7	1016.2	1016.2	1016.2	1016.1	1016.1	1016.6	1017.8	1018.9	1019.0	1018.9	1018.8	1016.4
6	1018.3	1018.0	1017.8	1017.4	1017.2	1017.2	1016.9	1016.8	1016.1	1015.5	1014.9	1014.3	1013.9	1013.1	1012.3	1012.1	1012.3	1013.5	1015.0	1016.1	1017.0	1017.2	1017.1	1017.2	1015.7
7	1016.6	1016.2	1015.8	1015.8	1016.2	1017.0	1017.2	1017.3	1018.0	1018.2	1018.2	1018.6	1018.8	1018.4	1019.0	1018.5	1018.9	1019.2	1019.3	1020.0	1020.8	1021.2	1021.2	1021.0	1018.4
8	1020.9	1020.3	1019.7	1019.3	1019.0	1019.2	1019.2	1019.0	1018.5	1018.2	1017.2	1016.6	1016.1	1015.3	1015.2	1015.1	1015.0	1015.0	1015.1	1015.2	1015.8	1016.1	1016.2	1016.1	1017.2
9	1015.3	1014.9	1014.5	1014.1	1013.5	1014.0	1014.0	1013.5	1012.9	1012.2	1011.3	1010.8	1010.6	1009.2	1008.1	1007.0	1006.8	1007.1	1007.6	1008.1	1008.3	1008.3	1008.4	1009.1	1010.8
10	1009.3	1009.1	1008.6	1008.6	1009.3	1009.2	1009.5	1010.0	1010.0	1010.1	1010.2	1010.1	1010.0	1009.3	1008.9	1008.3	1007.9	1007.9	1008.8	1009.2	1009.4	1010.0	1010.1	1010.2	1009.3
11	1010.1	1010.0	1009.4	1009.4	1009.2	1010.1	1010.8	1011.3	1012.1	1012.3	1012.8	1012.9	1013.4	1015.4	1016.5	1017.0	1017.0	1017.6	1018.1	1018.8	1019.6	1020.1	1020.0	1019.7	1014.3
12	1019.2	1019.0	1018.3	1017.6	1017.1	1016.8	1016.2	1015.8	1014.6	1014.0	1013.0	1012.1	1011.3	1011.1	1010.9	1010.2	1010.6	1011.8	1013.3	1014.5	1015.3	1015.4	1015.2	1015.2	1014.5
13	1015.1	1015.0	1015.0	1014.5	1014.3	1014.8	1015.0	1015.1	1014.4	1014.1	1013.4	1013.1	1012.4	1012.0	1011.2	1010.3	1009.9	1009.2	1009.4	1010.1	1010.1	1011.1	1011.5	1011.5	1012.6
14	1011.7	1011.3	1011.2	1011.3	1011.8	1012.1	1012.2	1013.2	1013.2	1013.2	1013.2	1013.1	1013.6	1014.4	1015.1	1015.4	1015.9	1016.1	1016.3	1017.2	1017.7	1018.0	1017.4	1017.2	1014.2
15	1017.0	1016.3	1015.8	1015.2	1015.1	1014.9	1014.7	1014.2	1013.8	1013.1	1012.4	1011.8	1011.2	1010.4	1010.1	1010.0	1010.1	1010.8	1012.0	1012.7	1013.0	1013.0	1012.9	1013.0	1013.1
16	1012.4	1012.2	1011.1	1011.0	1011.0	1011.2	1011.2	1011.2	1011.1	1011.1	1011.1	1011.1	1011.1	1011.2	1011.2	1011.8	1012.1	1012.2	1012.3	1013.1	1013.7	1014.2	1014.3	1014.5	1012.0
17	1014.8	1014.9	1015.0	1015.1	1015.9	1016.4	1017.1	1017.6	1017.9	1018.0	1018.1	1018.1	1018.2	1018.3	1018.2	1018.2	1018.5	1018.9	1019.5	1020.2	1021.1	1021.8	1022.0	1022.1	1018.1
18	1022.2	1021.9	1021.4	1021.0	1020.8	1020.7	1020.3	1020.2	1019.3	1018.3	1018.3	1017.4	1016.2	1015.1	1013.8	1013.3	1013.3	1014.3	1015.9	1017.7	1018.8	1019.0	1019.7	1020.2	1018.3
19	1020.2	1019.8	1019.6	1020.1	1020.6	1021.5	1021.8	1022.0	1022.0	1021.8	1021.2	1021.0	1021.2	1021.4	1022.1	1022.4	1023.0	1023.1	1023.2	1023.8	1024.4	1025.1	1025.1	1025.1	1022.1
20	1025.0	1024.4	1024.2	1024.2	1024.3	1024.8	1024.9	1024.8	1024.8	1024.1	1023.6	1023.0	1022.3	1022.2	1021.6	1021.0	1020.8	1020.5	1020.9	1021.2	1022.1	1022.5	1022.1	1021.7	1023.0
21	1021.3	1020.4	1019.4	1019.0	1018.3	1017.9	1017.9	1017.7	1016.3	1015.9	1015.6	1014.5	1014.1	1013.6	1012.8	1012.0	1012.0	1012.2	1012.2	1012.8	1013.8	1014.3	1014.8	1014.6	1015.5
22	1014.3	1014.1	1014.0	1014.1	1014.2	1014.3	1015.0	1014.9	1015.0	1014.7	1014.6	1014.3	1014.1	1014.0	1014.2	1015.1	1015.6	1015.6	1016.2	1017.1	1018.2	1018.3	1019.1	1018.9	1015.4
23	1019.0	1018.5	1018.6	1018.7	1019.1	1019.1	1019.4	1020.0	1019.2	1019.5	1020.1	1019.7	1019.3	1018.8	1018.6	1018.3	1018.3	1018.1	1017.7	1017.9	1018.0	1018.1	1018.0	1017.8	1018.7
24	1017.5	1016.8	1016.5	1016.1	1016.1	1016.9	1017.2	1017.4	1017.3	1017.1	1017.1	1016.8	1017.0	1017.2	1017.0	1017.7	1019.6	1020.3	1020.9	1021.8	1022.3	1023.1	1023.6	1024.1	1018.6
25	1024.1	1024.2	1024.0	1024.0	1024.4	1025.1	1025.4	1026.1	1026.2	1026.3	1026.1	1025.6	1025.0	1024.2	1024.0	1024.1	1024.2	1024.8	1024.9	1025.0	1025.3	1025.3	1025.2	1025.1	1024.9
26	1024.3	1023.8	1023.2	1023.1	1023.1	1023.0	1022.8	1022.4	1021.9	1021.4	1021.1	1020.2	1019.8	1019.2	1019.1	1018.3	1018.0	1018.3	1019.0	1019.3	1020.0	1020.1	1019.9	1019.6	1020.9
27	1019.1	1019.1	1018.5	1018.2	1018.3	1019.0	1019.2	1019.1	1019.2	1019.2	1018.5	1018.1	1018.0	1017.2	1017.1	1017.0	1017.3	1017.3	1018.0	1018.1	1018.5	1019.0	1018.8	1018.6	1018.3
28	1018.6	1018.8	1018.2	1018.1	1017.9	1018.2	1018.5	1018.5	1018.2	1018.2	1018.3	1018.2	1018.1	1018.0	1017.6	1017.3	1017.3	1018.0	1018.0	1018.7	1019.6	1020.1	1020.1	1020.1	1018.4
29	1019.6	1019.2	1019.2	1019.2	1019.3	1019.4	1019.3	1019.5	1019.2	1019.3	1019.2	1019.1	1018.9	1019.0	1019.0	1019.4	1020.0	1019.3	1019.3	1020.0	1020.9	1020.5	1020.8	1020.7	1019.5
30	1020.3	1020.1	1019.8	1019.6	1019.6	1019.8	1020.1	1020.0	1019.8	1019.8	1019.3	1019.0	1018.3	1017.9	1017.7	1018.1	1019.3	1020.1	1019.9	1019.8	1020.0	1020.2	1019.9	1018.7	1019.5
31	1018.2	1018.1	1017.9	1017.9	1017.7	1017.9	1017.6	1017.4	1017.8	1017.7	1017.8	1017.6	1017.2	1017.2	1017.1	1016.6	1016.2	1016.4	1016.8	1017.0	1017.2	1017.7	1017.7	1017.2	1017.4
<b>Total</b>	<b>31552.5</b>	<b>31542.6</b>	<b>31531.2</b>	<b>31525.2</b>	<b>31526.1</b>	<b>31534.5</b>	<b>31537.6</b>	<b>31539.8</b>	<b>31533.8</b>	<b>31527.8</b>	<b>31520.4</b>	<b>31510.7</b>	<b>31504.3</b>	<b>31496.4</b>	<b>31490.7</b>	<b>31487.1</b>	<b>31493.5</b>	<b>31501.4</b>	<b>31516.0</b>	<b>31536.0</b>	<b>31555.3</b>	<b>31566.0</b>	<b>31567.9</b>	<b>31566.3</b>	<b>31527.6</b>
<b>Mit</b>	<b>1017.8</b>	<b>1017.5</b>	<b>1017.1</b>	<b>1016.9</b>	<b>1017.0</b>	<b>1017.2</b>	<b>1017.3</b>	<b>1017.4</b>	<b>1017.2</b>	<b>1017.0</b>	<b>1016.8</b>	<b>1016.5</b>	<b>1016.3</b>	<b>1016.0</b>	<b>1015.8</b>	<b>1015.7</b>	<b>1015.9</b>	<b>1016.2</b>	<b>1016.6</b>	<b>1017.3</b>	<b>1017.9</b>	<b>1018.3</b>	<b>1018.3</b>	<b>1018.3</b>	<b>1017.0</b>
<b>Màx.</b>	<b>1025.0</b>	<b>1024.4</b>	<b>1024.2</b>	<b>1024.2</b>	<b>1024.4</b>	<b>1025.1</b>	<b>1025.4</b>	<b>1026.1</b>	<b>1026.2</b>	<b>1026.3</b>	<b>1026.1</b>	<b>1025.6</b>	<b>1025.0</b>	<b>1024.2</b>	<b>1024.0</b>	<b>1024.1</b>	<b>1024.2</b>	<b>1024.8</b>	<b>1024.9</b>	<b>1025.0</b>	<b>1025.3</b>	<b>1025.3</b>	<b>1025.2</b>	<b>1025.1</b>	<b>1024.9</b>
<b>Dia</b>	<b>20</b>	<b>20</b>	<b>20</b>	<b>20</b>	<b>25</b>	<b>25</b>	<b>25</b>	<b>25</b>	<b>25</b>	<b>25</b>	<b>25</b>	<b>25</b>	<b>25</b>	<b>25</b>	<b>25</b>	<b>25</b>	<b>25</b>	<b>25</b>	<b>25</b>	<b>25</b>	<b>25</b>	<b>25</b>	<b>25</b>	<b>25</b>	<b>25</b>
<b>Mín.</b>	<b>1009.3</b>	<b>1009.1</b>	<b>1008.6</b>	<b>1008.6</b>	<b>1009.1</b>	<b>1009.2</b>	<b>1009.1</b>	<b>1009.0</b>	<b>1009.5</b>	<b>1009.9</b>	<b>1009.9</b>	<b>1010.1</b>	<b>1010.0</b>	<b>1009.2</b>	<b>1008.1</b>	<b>1007.0</b>	<b>1006.8</b>	<b>1007.1</b>	<b>1007.6</b>	<b>1008.1</b>	<b>1008.3</b>	<b>1008.3</b>	<b>1008.4</b>	<b>1009.1</b>	<b>1009.3</b>
<b>Dia</b>	<b>10</b>	<b>10</b>	<b>10</b>	<b>10</b>	<b>1</b>	<b>1</b>	<b>1</b>	<b>1</b>	<b>1</b>	<b>1</b>	<b>1</b>	<b>1</b>	<b>10</b>	<b>9</b>	<b>9</b>	<b>9</b>	<b>9</b>	<b>9</b>	<b>9</b>	<b>9</b>	<b>9</b>	<b>9</b>	<b>9</b>	<b>10</b>	<b>10</b>

**OBSERVATORI  
METEOROLÒGIC**

**DE**

**ARBÚCIES**

Coordenades UTM

X=458565.7

Y=4629695.7

Fus=31



**HUMITAT**

**%**

MES DE

**MAIG**

ANY

**2021**



meteoguilleries.cat

info@meteoguilleries.cat

www.meteoguilleries.cat

Dia	0:00	1:00	2:00	3:00	4:00	5:00	6:00	7:00	8:00	9:00	10:00	11:00	12:00	13:00	14:00	15:00	16:00	17:00	18:00	19:00	20:00	21:00	22:00	23:00	Mit
1	86.7	90.6	92.9	93.3	94.0	94.6	94.9	95.2	95.3	95.5	95.2	94.5	93.6	92.8	90.7	89.6	90.8	88.9	91.8	94.1	94.6	94.9	95.1	95.3	93.1
2	95.5	95.5	95.6	95.6	95.6	95.7	95.7	94.3	83.5	65.6	62.3	64.5	60.9	64.0	61.9	60.8	64.1	66.6	74.3	83.5	80.7	83.3	84.1	86.6	79.6
3	87.3	88.6	87.4	83.0	89.6	86.8	73.4	51.1	39.4	37.2	39.8	40.5	47.7	47.8	49.0	46.8	45.5	48.1	59.7	76.3	82.5	83.4	87.2	88.9	65.3
4	90.6	90.3	71.9	65.1	71.1	71.8	63.7	53.4	47.9	36.6	36.8	35.3	36.1	39.4	43.4	44.4	48.2	53.0	66.2	77.6	83.2	86.5	83.3	83.1	61.6
5	87.9	87.2	85.1	89.8	89.8	90.8	75.6	62.1	53.5	48.6	47.0	50.7	50.9	50.5	55.7	58.4	59.9	64.4	68.8	78.3	86.5	89.9	91.6	92.6	71.5
6	93.0	93.0	93.0	92.9	93.3	93.1	86.8	70.8	65.2	58.0	34.0	30.3	28.4	27.0	24.3	24.9	53.0	59.8	66.8	77.5	79.6	80.0	79.7	80.4	66.0
7	82.3	84.4	84.9	83.6	83.7	80.3	72.8	58.7	56.0	55.6	59.0	61.1	62.2	66.9	82.2	83.9	79.7	79.5	84.0	88.5	91.4	93.0	93.9	94.4	77.6
8	94.7	94.9	95.1	95.3	95.6	95.9	94.8	73.4	58.7	47.3	40.9	36.7	29.8	33.2	38.1	32.3	27.2	37.6	58.6	67.5	74.5	78.0	77.4	80.7	64.9
9	80.2	79.9	79.7	83.4	85.7	87.0	80.6	76.6	64.9	57.9	55.4	49.6	52.5	55.3	58.8	57.2	59.7	63.9	69.6	75.6	82.1	50.7	64.1	83.1	68.9
10	88.5	92.8	94.1	94.8	95.1	95.4	95.4	95.2	95.2	94.7	92.6	92.9	93.6	92.5	75.8	62.4	62.7	66.7	76.6	81.3	88.3	91.5	91.8	81.6	87.1
11	67.3	62.1	62.7	77.6	86.9	80.6	54.9	55.2	53.1	52.7	49.3	46.3	53.9	81.5	89.0	89.5	73.9	77.5	87.0	88.9	92.0	92.8	92.8	93.5	73.4
12	93.9	94.3	93.2	91.4	91.6	89.8	77.4	67.9	55.6	32.0	30.4	32.5	31.2	30.1	29.6	27.8	28.4	39.1	53.5	67.8	73.5	78.0	81.7	85.9	61.5
13	88.4	90.6	91.3	91.8	92.7	92.1	89.6	81.5	68.4	60.3	54.2	50.1	45.2	42.7	38.3	35.2	30.3	33.2	41.7	52.2	50.3	62.0	69.4	72.9	63.5
14	77.7	81.1	80.7	79.1	81.9	83.1	80.3	86.9	88.8	83.6	68.5	57.2	56.2	56.1	61.8	76.5	87.8	91.0	91.6	92.7	93.7	94.1	94.5	94.7	80.8
15	94.8	94.9	95.1	94.9	95.1	95.3	94.7	94.6	81.9	61.6	52.9	39.4	32.1	30.3	30.0	32.1	35.1	44.4	53.6	66.1	70.4	75.7	76.6	79.2	67.5
16	80.1	79.9	79.6	80.1	80.9	77.9	76.0	67.9	51.9	53.5	52.5	53.7	51.7	50.4	50.4	56.9	58.1	61.6	71.4	79.0	76.4	78.7	79.8	84.3	68.0
17	86.8	89.6	91.4	91.7	90.3	84.6	81.2	71.3	71.8	61.5	56.3	56.1	58.9	58.5	60.2	59.5	61.8	68.2	73.2	76.3	80.0	86.4	89.3	91.0	74.8
18	91.5	91.1	88.2	89.0	90.8	92.0	87.5	75.9	64.3	57.4	57.9	56.7	48.7	47.8	45.1	45.1	42.7	55.6	60.1	68.2	71.5	75.2	78.7	82.0	69.3
19	83.5	83.5	82.4	83.0	84.3	81.7	78.7	72.8	62.8	52.4	42.6	43.7	52.4	58.3	67.4	74.6	85.0	90.0	87.4	87.1	89.6	88.8	88.1	88.5	75.4
20	89.5	90.9	90.1	89.7	91.4	88.0	77.5	79.6	70.3	64.2	59.1	54.1	50.7	50.1	46.9	48.2	48.5	53.1	66.2	77.6	82.0	83.5	85.2	88.3	71.9
21	90.6	91.7	92.6	92.7	93.3	93.7	85.1	66.7	56.9	40.6	36.4	36.0	39.1	44.1	45.7	45.4	51.4	53.4	59.1	72.1	78.6	79.8	80.8	74.4	66.7
22	65.9	70.8	76.7	81.2	85.2	85.3	75.6	69.1	69.6	61.3	52.5	46.5	39.6	38.7	48.7	53.4	60.3	59.8	61.9	72.4	73.3	71.7	72.0	73.7	65.2
23	76.6	80.9	81.4	83.1	87.1	86.2	73.7	64.0	55.3	57.0	54.7	49.7	49.0	52.9	56.5	57.8	61.8	64.0	69.0	72.3	73.9	78.0	82.2	84.6	68.8
24	86.5	86.5	87.9	89.8	91.3	92.0	90.5	72.8	62.8	54.8	51.4	42.7	40.7	43.5	45.4	53.8	61.3	63.5	65.4	66.7	65.7	67.8	74.8	80.6	68.3
25	83.9	85.9	83.5	82.8	83.9	85.0	85.7	70.4	64.0	61.5	57.7	55.1	50.6	45.6	49.5	61.6	66.8	71.9	77.0	78.2	79.4	79.9	82.6	84.6	72.0
26	82.8	79.3	80.4	81.9	84.5	80.1	65.7	47.9	45.6	46.4	46.1	46.1	47.1	49.8	52.4	53.2	53.8	60.2	67.6	77.2	83.6	87.1	86.6	85.8	66.3
27	83.2	83.2	87.0	87.0	87.3	81.1	72.0	55.6	47.1	44.9	44.0	44.5	47.5	47.2	48.9	52.7	60.2	61.1	65.4	74.2	79.4	82.8	83.9	80.8	66.7
28	79.0	77.8	74.7	70.9	68.6	72.2	73.3	63.6	47.5	41.9	41.5	41.0	46.5	44.6	43.3	40.5	42.5	48.7	54.6	62.8	73.7	78.4	79.0	79.8	60.3
29	82.0	77.7	80.6	80.8	79.8	75.9	63.2	49.1	34.3	31.8	31.2	29.9	29.9	30.1	35.2	37.8	51.1	74.1	77.0	77.9	77.3	86.8	84.1	90.2	61.2
30	90.1	87.8	83.1	86.8	91.4	92.4	92.7	89.5	64.6	52.6	42.8	37.2	35.6	35.7	39.0	41.7	50.4	84.4	91.8	92.9	93.6	93.7	92.9	92.8	73.1
31	93.0	93.2	92.2	93.5	94.0	91.4	78.0	65.0	59.2	52.8	54.7	52.9	54.6	57.6	52.9	49.4	47.5	51.1	66.4	76.3	80.2	82.0	84.3	86.8	71.2
<b>Total</b>	<b>2653.5</b>	<b>2670.0</b>	<b>2654.4</b>	<b>2675.4</b>	<b>2725.7</b>	<b>2691.8</b>	<b>2486.9</b>	<b>2198.0</b>	<b>1935.3</b>	<b>1721.7</b>	<b>1599.6</b>	<b>1527.2</b>	<b>1517.0</b>	<b>1564.8</b>	<b>1615.9</b>	<b>1653.1</b>	<b>1749.4</b>	<b>1934.2</b>	<b>2157.5</b>	<b>2378.6</b>	<b>2481.5</b>	<b>2534.4</b>	<b>2587.2</b>	<b>2640.9</b>	<b>2181.4</b>
<b>Mit</b>	<b>85.6</b>	<b>86.1</b>	<b>85.6</b>	<b>86.3</b>	<b>87.9</b>	<b>86.8</b>	<b>80.2</b>	<b>70.9</b>	<b>62.4</b>	<b>55.5</b>	<b>51.6</b>	<b>49.3</b>	<b>48.9</b>	<b>50.5</b>	<b>52.1</b>	<b>53.3</b>	<b>56.4</b>	<b>62.4</b>	<b>69.6</b>	<b>76.7</b>	<b>80.0</b>	<b>81.8</b>	<b>83.5</b>	<b>85.2</b>	<b>70.4</b>
<b>Màx.</b>	<b>95.5</b>	<b>95.5</b>	<b>95.6</b>	<b>95.6</b>	<b>95.6</b>	<b>95.9</b>	<b>95.7</b>	<b>95.2</b>	<b>95.3</b>	<b>95.5</b>	<b>95.2</b>	<b>94.5</b>	<b>93.6</b>	<b>92.8</b>	<b>90.7</b>	<b>89.6</b>	<b>90.8</b>	<b>91.0</b>	<b>91.8</b>	<b>94.1</b>	<b>94.6</b>	<b>94.9</b>	<b>95.1</b>	<b>95.3</b>	<b>93.1</b>
<b>Dia</b>	<b>2</b>	<b>2</b>	<b>2</b>	<b>2</b>	<b>2</b>	<b>8</b>	<b>2</b>	<b>10</b>	<b>1</b>	<b>1</b>	<b>1</b>	<b>1</b>	<b>1</b>	<b>1</b>	<b>1</b>	<b>1</b>	<b>1</b>	<b>14</b>	<b>30</b>	<b>1</b>	<b>1</b>	<b>1</b>	<b>1</b>	<b>1</b>	<b>1</b>
<b>Min.</b>	<b>65.9</b>	<b>62.1</b>	<b>62.7</b>	<b>65.1</b>	<b>68.6</b>	<b>71.8</b>	<b>54.9</b>	<b>47.9</b>	<b>34.3</b>	<b>31.8</b>	<b>30.4</b>	<b>29.9</b>	<b>28.4</b>	<b>27.0</b>	<b>24.3</b>	<b>24.9</b>	<b>27.2</b>	<b>33.2</b>	<b>41.7</b>	<b>52.2</b>	<b>50.3</b>	<b>50.7</b>	<b>64.1</b>	<b>72.9</b>	<b>60.3</b>
<b>Dia</b>	<b>22</b>	<b>11</b>	<b>11</b>	<b>4</b>	<b>28</b>	<b>4</b>	<b>11</b>	<b>26</b>	<b>29</b>	<b>29</b>	<b>12</b>	<b>29</b>	<b>6</b>	<b>6</b>	<b>6</b>	<b>6</b>	<b>8</b>	<b>13</b>	<b>13</b>	<b>13</b>	<b>13</b>	<b>9</b>	<b>9</b>	<b>13</b>	<b>28</b>

**OBSERVATORI  
METEOROLÒGIC**

**DE  
ARBÚCIES**

Coordenades UTM  
X=458565.7  
Y=4629695.7  
Fus=31



**PRECIPITACIÓ  
Meteors**

MES DE  
**MAIG**

ANY  
**2021**



[info@meteoguilleries.cat](mailto:info@meteoguilleries.cat)

[www.meteoguilleries.cat](http://www.meteoguilleries.cat)

Dia	PLUJA			
	mm	00:00 a 08:00	08:00 a 16:00	16:00 a 24:00
1	21.8	⊗ 13.7	⊗ 6.0	⊗ 2.1
2	0.0			
3	0.0			
4	0.0			
5	0.0			
6	0.0			
7	0.8	⊗	0.8	
8	0.0			
9	0.9		⊗	0.9
10	4.8	⊗ 2.4	⊗ 2.4	
<b>Suma</b>	<b>28.3</b>	<b>16.1</b>	<b>9.2</b>	<b>3.0</b>
11	4.7	⊗	4.7	
12	0.1	⊗ 0.1		
13	0.0			
14	3.3	⊗ 1.2	⊗ 1.6	0.5
15	0.1	⊗ 0.1		
16	0.0			
17	0.0			
18	0.0			
19	0.1		⊗	0.1
20	0.0			
<b>Suma</b>	<b>8.3</b>	<b>1.4</b>	<b>6.3</b>	<b>0.6</b>
21	0.0			
22	0.0			
23	0.0			
24	0.0			
25	0.0			
26	0.0			
27	0.0			
28	0.0			
29	1.8		⊗	1.8
30	9.8	⊗ 1.1	⊗	8.7
31	0.0			
<b>Suma</b>	<b>11.6</b>	<b>1.1</b>		<b>10.5</b>
<b>Total</b>	<b>48.2</b>	<b>18.6</b>	<b>15.5</b>	<b>14.1</b>
<b>Mit</b>	<b>1.6</b>	<b>0.6</b>	<b>0.5</b>	<b>0.5</b>

METEORS	
Dies de:	
Aiguaneu	⊗
Arc de sant martí	☾
Boira	≡
Boira gebradora	≡
Boira humida	≡
Boirina	=
Broma	⊗
Calabruix	△
Calamarsa	△
Calitja	∞
Fum	∞
Gebra	⊔
Glaçada	∞
Halo lunar	☾
Halo solar	☉
Inversió tèrmica	
Llampecs	↘
Neu	⊗
Neu al terra	⊗
Pedregada	▲
Plugim	●
Pluja de fang	
Pluja ip.	●
Pols en suspensió	s
Precipitació	⊗ 11
Rosada	☾
Tempesta	⊗
Trons	⊔
Vent	☉
Vent fort	☉
Xàfec	▽

DIES DE PRECIPITACIÓ	
< 0.1	
>=0.1	11
>=1.0	6
>=10	1
>=30	
Dia de pluja	1 21.8

**OBSERVATORI  
METEOROLÒGIC**

**DE**

**ARBÚCIES**

Coordenades UTM

X=458565.7

Y=4629695.7

Fus=31



**PRECIPITACIÓ  
INTENSITAT  
mm/hora**

MES DE  
**MAIG**

ANY  
**2021**



meteoguilleries.cat

info@meteoguilleries.cat

www.meteoguilleries.cat

Dia	0:00	1:00	2:00	3:00	4:00	5:00	6:00	7:00	8:00	9:00	10:00	11:00	12:00	13:00	14:00	15:00	16:00	17:00	18:00	19:00	20:00	21:00	22:00	23:00	Total	Mit		
1		0.7		1.4	2.2	1.9	5.5	2.0	2.8	2.9	0.3							0.7	1.2			0.1	0.1		21.8	1.7		
2																												
3																												
4																												
5																												
6																												
7														0.1	0.6	0.1										0.8	0.3	
8																												
9																							0.9			0.9	0.9	
10	2.3					0.1					1.4	0.8	0.1	0.1												4.8	0.8	
11														4.5		0.2											4.7	2.4
12	0.1																										0.1	0.1
13																												
14							0.4	0.8	1.0							0.6	0.5										3.3	0.7
15						0.1																					0.1	0.1
16																												
17																												
18																												
19																	0.1										0.1	0.1
20																												
21																												
22																												
23																												
24																												
25																												
26																												
27																												
28																												
29																	0.5					0.7	0.6				1.8	0.6
30				0.5		0.6											0.9	4.7	1.6	1.4	0.1						9.8	1.4
31																												
<b>Total</b>	<b>2.4</b>	<b>0.7</b>		<b>1.9</b>	<b>2.2</b>	<b>2.7</b>	<b>5.9</b>	<b>2.8</b>	<b>3.8</b>	<b>2.9</b>	<b>1.7</b>	<b>0.8</b>	<b>0.1</b>	<b>4.7</b>	<b>0.6</b>	<b>0.9</b>	<b>2.0</b>	<b>5.4</b>	<b>2.8</b>	<b>1.4</b>	<b>0.8</b>	<b>0.7</b>	<b>1.0</b>		<b>48.2</b>	<b>9.0</b>		
<b>Mit</b>	<b>1.2</b>	<b>0.7</b>		<b>1.0</b>	<b>2.2</b>	<b>0.7</b>	<b>3.0</b>	<b>1.4</b>	<b>1.9</b>	<b>2.9</b>	<b>0.9</b>	<b>0.8</b>	<b>0.1</b>	<b>1.6</b>	<b>0.6</b>	<b>0.3</b>	<b>0.5</b>	<b>2.7</b>	<b>1.4</b>	<b>1.4</b>	<b>0.4</b>	<b>0.4</b>	<b>0.5</b>		<b>4.4</b>	<b>0.8</b>		
<b>Màx.</b>	<b>2.3</b>	<b>0.7</b>		<b>1.4</b>	<b>2.2</b>	<b>1.9</b>	<b>5.5</b>	<b>2.0</b>	<b>2.8</b>	<b>2.9</b>	<b>1.4</b>	<b>0.8</b>	<b>0.1</b>	<b>4.5</b>	<b>0.6</b>	<b>0.6</b>	<b>0.9</b>	<b>4.7</b>	<b>1.6</b>	<b>1.4</b>	<b>0.7</b>	<b>0.6</b>	<b>0.9</b>		<b>21.8</b>	<b>2.4</b>		
<b>Dia</b>	<b>10</b>	<b>1</b>		<b>1</b>	<b>1</b>	<b>1</b>	<b>1</b>	<b>1</b>	<b>1</b>	<b>1</b>	<b>10</b>	<b>10</b>	<b>10</b>	<b>11</b>	<b>7</b>	<b>14</b>	<b>30</b>	<b>30</b>	<b>30</b>	<b>30</b>	<b>29</b>	<b>29</b>	<b>9</b>		<b>1</b>	<b>11</b>		
<b>Min.</b>	<b>0.1</b>	<b>0.7</b>		<b>0.5</b>	<b>2.2</b>	<b>0.1</b>	<b>0.4</b>	<b>0.8</b>	<b>1.0</b>	<b>2.9</b>	<b>0.3</b>	<b>0.8</b>	<b>0.1</b>	<b>0.1</b>	<b>0.6</b>	<b>0.1</b>	<b>0.1</b>	<b>0.7</b>	<b>1.2</b>	<b>1.4</b>	<b>0.1</b>	<b>0.1</b>	<b>0.1</b>		<b>0.1</b>	<b>0.1</b>		
<b>Dia</b>	<b>12</b>	<b>1</b>		<b>30</b>	<b>1</b>	<b>10</b>	<b>14</b>	<b>14</b>	<b>14</b>	<b>1</b>	<b>1</b>	<b>10</b>	<b>10</b>	<b>7</b>	<b>7</b>	<b>7</b>	<b>19</b>	<b>1</b>	<b>1</b>	<b>30</b>	<b>30</b>	<b>1</b>	<b>1</b>		<b>12</b>	<b>12</b>		

**OBSERVATORI  
METEOROLÒGIC**

**DE**

**ARBÚCIES**

Coordenades UTM

X=458565.7

Y=4629695.7

Fus=31



**RESUM MENSUAL**

MES DE  
**MAIG**

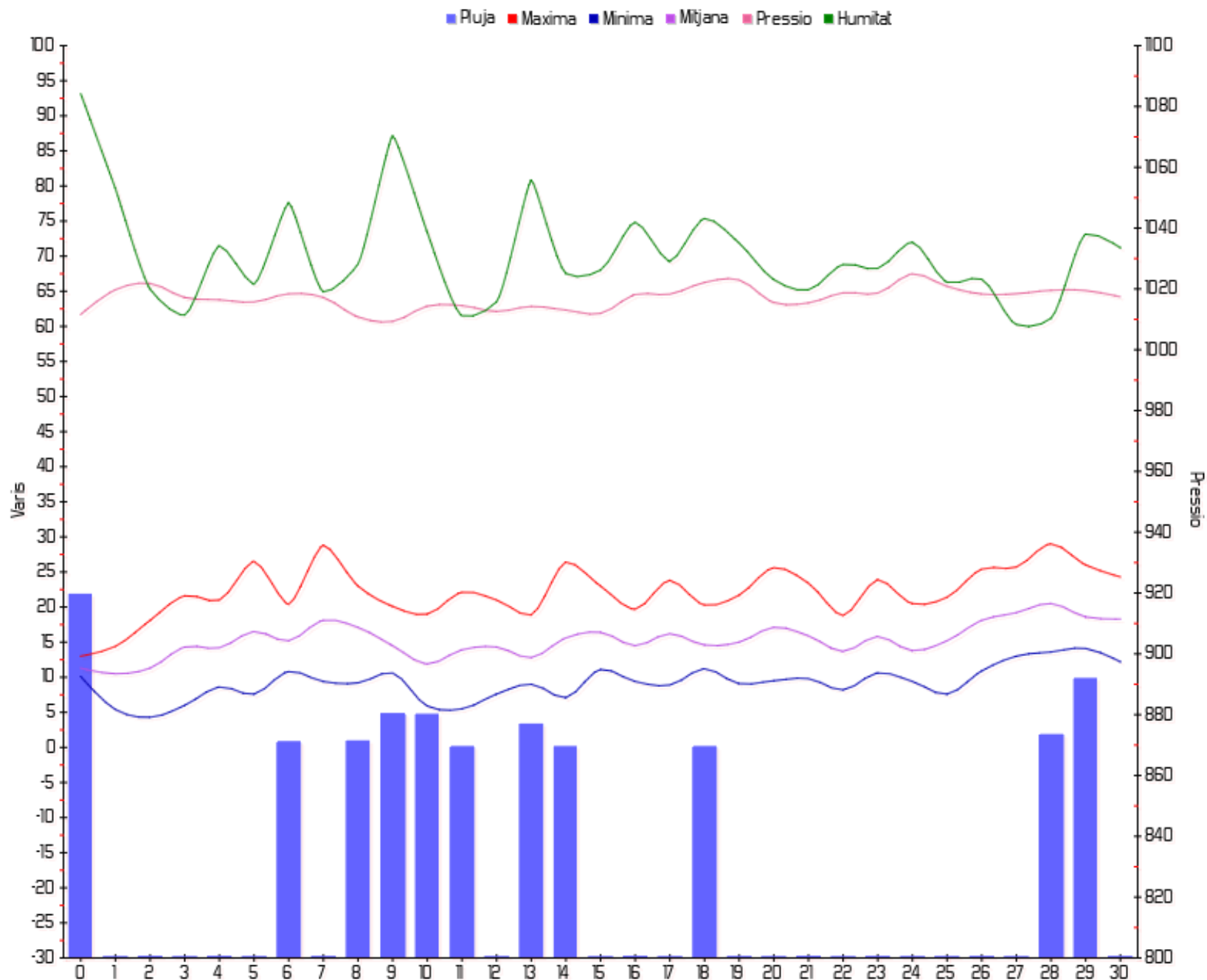
ANY  
**2021**



meteoguilleries.cat

info@meteoguilleries.cat

www.meteoguilleries.cat





**OBSERVATORI  
METEOROLÒGIC  
DE  
ARBÚCIES**

Coordenades UTM  
X=458565.7  
Y=4629695.7  
Fus=31



**RESUM MENSUAL**

MES DE  
**MAIG**

ANY  
**2021**



meteoguilleries.cat

info@meteoguilleries.cat

www.meteoguilleries.cat

**TEMPERATURES**  
Màxima °C  
Mínima °C  
Oscil·lació °C  
Mitjana °C  
TEMPERATURES A 00:00 HORES °C  
TEMPERATURES A 04:00 HORES °C  
TEMPERATURES A 08:00 HORES °C  
TEMPERATURES A 12:00 HORES °C  
TEMPERATURES A 16:00 HORES °C  
TEMPERATURES A 20:00 HORES °C

**PRESSIÓ**  
PRESSIÓ ABSOLUTA Hpa.  
PRESSIÓ A 00:00 HORES Hpa.  
PRESSIÓ A 04:00 HORES Hpa.  
PRESSIÓ A 08:00 HORES Hpa.  
PRESSIÓ A 12:00 HORES Hpa.  
PRESSIÓ A 16:00 HORES Hpa.  
PRESSIÓ A 20:00 HORES Hpa.

**HUMITAT**  
HUMITAT ABSOLUTA %  
HUMITAT A 00:00 HORES %  
HUMITAT A 04:00 HORES %  
HUMITAT A 08:00 HORES %  
HUMITAT A 12:00 HORES %  
HUMITAT A 16:00 HORES %  
HUMITAT A 20:00 HORES %

**VENT**  
VELOCITAT km/h  
DIRECCIÓ DOMINANT

**METEORS I PRECIPITACIÓ**  
DIES DE BOIRA ≡  
DIES DE ROSADA ∇  
DIES DE TEMPESTA ⚡  
DIES DE GELADA ~  
DIES DE CALAMARSA o PEDRA ▲  
DIES DE NEU ✖

PRECIPITACIÓ mm  
DIES DE PRECIPITACIÓ  
MM A 08:00 HORES  
MM A 16:00 HORES  
MM A 24:00 HORES

PRECIPITACIÓ ACUMULADA  
Mitjana MENSUAL  
INTENSITAT MÀXIMA mm/5min

	Màxima	Dia	Mínima	Dia	Mitjana
Màxima	29.0°	29	13.0°	1	22.2°
Mínima	14.1°	30	4.3°	3	9.2°
Oscil·lació	19.4°	8	2.9°	1	12.9°
Mitjana	20.5°	29	10.5°	2	15.3°
TEMPERATURES A 00:00 HORES	15.2°	30	5.5°	3	10.8°
TEMPERATURES A 04:00 HORES	17.8°	29	8.1°	3	12.4°
TEMPERATURES A 08:00 HORES	27.0°	29	11.3°	1	19.1°
TEMPERATURES A 12:00 HORES	27.0°	29	12.5°	1	20.4°
TEMPERATURES A 16:00 HORES	21.6°	28	11.0°	2	16.8°
TEMPERATURES A 20:00 HORES	17.6°	9	6.7°	11	12.4°

PRESSIÓ ABSOLUTA	Hpa.	1026.0	25	1007.4	9	1017.0
PRESSIÓ A 00:00 HORES	Hpa.	1024.4	20	1008.9	10	1017.4
PRESSIÓ A 04:00 HORES	Hpa.	1025.3	25	1009.1	1	1017.2
PRESSIÓ A 08:00 HORES	Hpa.	1026.0	25	1009.9	1	1016.9
PRESSIÓ A 12:00 HORES	Hpa.	1024.3	25	1008.7	9	1016.0
PRESSIÓ A 16:00 HORES	Hpa.	1024.7	25	1007.4	9	1016.5
PRESSIÓ A 20:00 HORES	Hpa.	1025.2	25	1008.5	9	1018.2

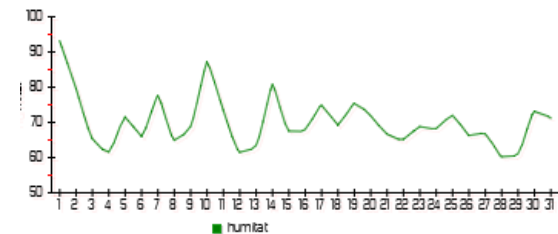
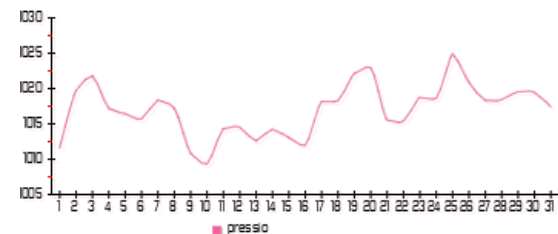
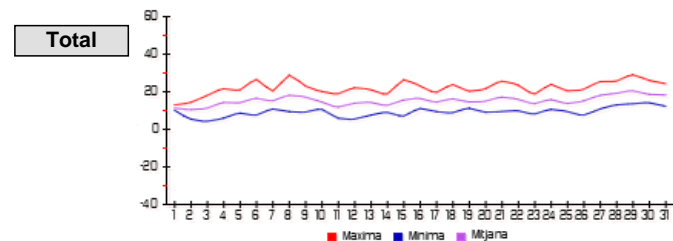
HUMITAT ABSOLUTA	%	95.5	2	26.1	6	70.4
HUMITAT A 00:00 HORES	%	95.5	2	67.4	11	85.9
HUMITAT A 04:00 HORES	%	95.3	2	65.0	4	81.5
HUMITAT A 08:00 HORES	%	95.1	1	31.8	29	54.7
HUMITAT A 12:00 HORES	%	91.7	1	26.1	6	51.2
HUMITAT A 16:00 HORES	%	91.4	1	39.4	13	66.3
HUMITAT A 20:00 HORES	%	95.0	1	63.6	13	82.6

VELOCITAT	km/h	43.1	12	17.3	1	5.4

DIES DE BOIRA	≡					
DIES DE ROSADA	∇					
DIES DE TEMPESTA	⚡					
DIES DE GELADA	~					
DIES DE CALAMARSA o PEDRA	▲					
DIES DE NEU	✖					
PRECIPITACIÓ	mm	4.8	10	0.1	12	4.4

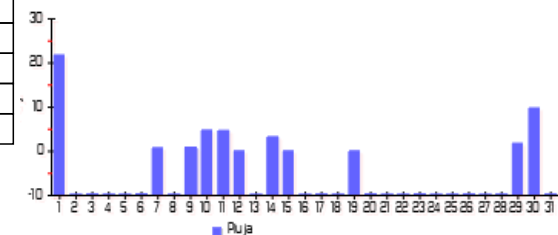
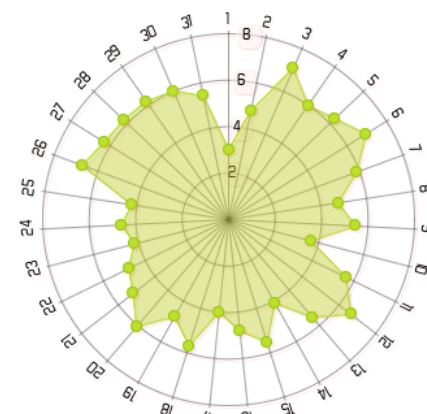
DIES DE PRECIPITACIÓ						
MM A 08:00 HORES	☉	13.7	1.0	0.1	12.0	3.1
MM A 16:00 HORES	☉	6.0	1.0	0.8	7.0	3.1
MM A 24:00 HORES	☉	8.7	30.0	0.1	19.0	2.4

PRECIPITACIÓ ACUMULADA					
Mitjana MENSUAL					
INTENSITAT MÀXIMA mm/5min		1.8	30		



**SW**

0
0
0
0
0
0
48.2
11
18.6
15.5
14.1
186.6
1.3



**OBSERVATORI  
METEOROLÒGIC**

**DE  
ARBÚCIES**

Coordenades UTM  
X=458565.7  
Y=4629695.7  
Fus=31



**VENT  
km/h**

**MES DE  
MAIG**

**ANY  
2021**



[info@meteoguilleries.cat](mailto:info@meteoguilleries.cat)

[www.meteoguilleries.cat](http://www.meteoguilleries.cat)

**VELOCITAT DEL VENT-MITJANA**

Dia	00:00 am	04:00 am	08:00 am	12:00 am	16:00 pm	20:00 pm
1	2.4	1.5	2.5	6.3	4.2	1.2
2	2.0	3.0	4.5	7.9	3.6	7.7
3	6.6	7.3	6.2	9.9	5.7	6.8
4	5.3	3.8	7.7	9.1	4.3	5.8
5	6.0	5.2	8.1	9.2	3.2	6.2
6	6.4	5.5	8.7	9.3	4.6	7.3
7	8.8	6.5	6.6	5.7	2.1	5.7
8	4.1	1.9	5.2	7.4	4.9	5.0
9	6.5	4.5	7.0	5.0	4.6	5.2
10	3.3	4.5	1.6	5.0	3.4	4.2

<b>Suma</b>	<b>51.4</b>	<b>43.7</b>	<b>58.1</b>	<b>74.7</b>	<b>40.6</b>	<b>55.0</b>
-------------	-------------	-------------	-------------	-------------	-------------	-------------

11	6.2	6.0	6.0	4.7	3.2	7.8
12	8.5	5.2	7.3	11.2	4.8	3.0
13	3.6	4.8	6.9	8.4	5.7	3.9
14	6.3	1.9	5.2	6.2	1.8	3.4
15	5.3	3.3	5.3	9.2	4.3	5.9
16	6.7	5.2	5.6	6.4	3.5	1.3
17	2.7	2.6	4.6	6.3	3.7	4.2
18	6.6	4.1	6.1	7.0	7.2	3.0
19	2.3	4.0	7.6	6.8	3.7	4.3
20	4.2	5.5	7.1	7.3	4.7	7.6

<b>Suma</b>	<b>52.4</b>	<b>42.6</b>	<b>61.7</b>	<b>73.5</b>	<b>42.5</b>	<b>44.4</b>
-------------	-------------	-------------	-------------	-------------	-------------	-------------

21	3.1	2.6	7.2	9.9	4.6	3.8
22	2.2	2.3	5.9	7.3	3.5	7.4
23	5.0	3.5	5.5	6.6	3.1	1.3
24	3.0	3.2	7.6	7.1	4.2	2.5
25	6.3	2.6	4.3	6.0	3.9	2.3
26	7.6	6.0	7.2	8.5	5.1	6.0
27	8.0	4.3	6.6	9.8	4.6	4.4
28	6.7	5.8	6.4	8.6	3.5	6.3
29	7.2	7.0	6.1	6.8	5.2	4.9
30	6.8	4.6	6.4	8.9	3.6	5.9
31	3.9	5.2	6.0	8.0	4.5	5.1

<b>Suma</b>	<b>59.7</b>	<b>47.2</b>	<b>69.2</b>	<b>87.5</b>	<b>45.9</b>	<b>49.9</b>
-------------	-------------	-------------	-------------	-------------	-------------	-------------

<b>Total</b>	<b>163.5</b>	<b>133.5</b>	<b>189.0</b>	<b>235.7</b>	<b>129.0</b>	<b>149.3</b>
<b>Mit</b>	<b>5.3</b>	<b>4.3</b>	<b>6.1</b>	<b>7.6</b>	<b>4.2</b>	<b>4.8</b>

**VELOCITAT ABSOLUTA**

Màxima	Hora	DIR MIT	DESVIACIÓ
17.3	14:20:00	52.8	20.7
33.5	13:50:00	233.6	22.0
33.9	13:40:00	218.4	22.4
28.6	14:40:00	220.7	24.7
27.9	11:05:00	217.4	22.0
35.3	12:00:00	219.3	24.2
23.6	10:55:00	217.8	20.4
28.9	14:20:00	218.8	29.5
33.2	21:50:00	221.8	28.2
20.8	16:05:00	222.0	23.7

<b>283.0</b>	<b>2042.6°</b>	<b>237.8°</b>
--------------	----------------	---------------

31.0	12:45:00	232.7	25.9
43.1	14:10:00	215.7	26.4
43.1	17:30:00	231.7	31.7
27.9	12:30:00	229.6	21.6
39.2	14:25:00	223.1	28.1
24.7	15:10:00	212.7	22.8
29.6	12:35:00	218.6	27.4
39.9	15:55:00	221.6	32.2
28.6	13:50:00	38.1	25.6
27.2	12:10:00	225.0	23.1

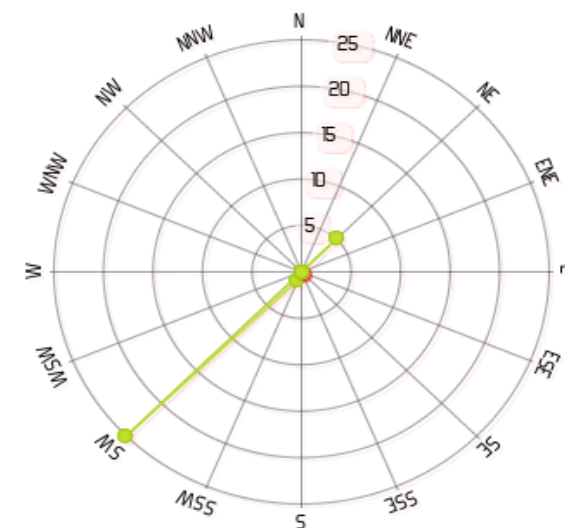
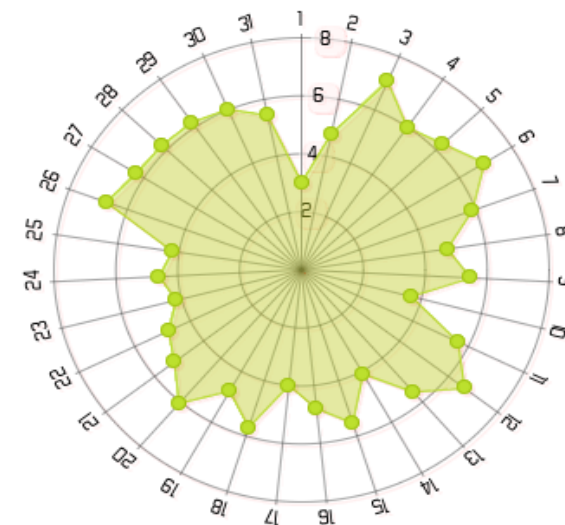
<b>334.3</b>	<b>2048.8°</b>	<b>264.8°</b>
--------------	----------------	---------------

32.8	14:15:00	42.2	28.1
26.8	15:10:00	229.5	24.5
21.2	12:20:00	45.4	22.0
27.2	15:50:00	42.7	26.9
22.6	15:00:00	215.0	23.3
26.8	13:00:00	218.3	21.5
30.0	13:45:00	228.4	21.1
28.2	13:25:00	219.4	21.6
33.2	12:30:00	228.3	24.5
34.2	13:55:00	221.8	27.2
26.8	15:55:00	220.3	24.4

<b>309.8</b>	<b>1911.3°</b>	<b>265.1°</b>
--------------	----------------	---------------

<b>927.1</b>	<b>6002.7°</b>	<b>767.7°</b>
<b>29.9</b>	<b>193.6°</b>	<b>24.8°</b>

**DIRECCIÓ DOMINANT-VELOCITAT MITJANA**



**OBSERVATORI  
METEOROLÒGIC**

**DE  
ARBÚCIES**

Coordenades UTM  
X=458565.7  
Y=4629695.7  
Fus=31



**VELOCITAT  
VENT  
KM/H**

MES DE  
**MAIG**

ANY  
**2021**



meteoguilleries.cat

info@meteoguilleries.cat

www.meteoguilleries.cat

Dia	0:00	1:00	2:00	3:00	4:00	5:00	6:00	7:00	8:00	9:00	10:00	11:00	12:00	13:00	14:00	15:00	16:00	17:00	18:00	19:00	20:00	21:00	22:00	23:00	Total	Mit
1	1.7	1.7	3.5	2.8	1.3	1.6	0.7	2.3	1.8	2.3	1.6	4.5	6.0	6.3	6.6	6.5	6.4	4.8	2.2	3.2	2.8	0.7	0.2	1.0	72.2	3.0
2	0.5	2.2	3.9	1.6	4.8	3.2	3.2	0.7	1.6	5.5	6.2	4.8	5.4	10.7	9.4	6.2	3.3	3.1	2.9	5.2	7.4	7.8	8.0	7.5	115.0	4.8
3	7.3	6.1	6.8	6.3	8.9	9.7	8.7	1.9	3.3	5.2	7.1	9.1	10.0	10.5	10.1	8.9	8.3	5.4	2.6	6.3	7.0	6.5	6.9	6.9	169.6	7.1
4	5.4	3.3	6.6	5.9	4.1	4.7	2.4	4.1	7.9	5.9	7.9	8.9	6.2	10.9	9.8	9.4	5.3	3.5	2.3	6.3	5.1	6.8	7.5	3.6	143.7	6.0
5	7.0	7.1	5.9	4.0	5.2	6.5	5.0	4.4	7.0	6.8	7.5	11.0	9.5	9.4	10.5	7.3	4.3	3.6	2.1	2.7	4.9	6.0	6.8	6.9	151.4	6.3
6	7.0	6.3	6.9	5.6	7.7	5.9	2.4	5.9	7.4	6.5	10.1	10.9	10.2	9.5	10.8	6.6	5.5	6.9	2.0	4.1	4.7	7.3	7.9	9.4	167.4	7.0
7	9.6	8.6	8.1	8.7	9.1	8.7	4.8	3.3	5.5	6.4	7.4	7.2	6.9	5.9	5.1	4.9	2.6	1.4	2.2	2.4	5.3	6.3	5.4	5.6	141.3	5.9
8	6.0	4.8	2.3	3.3	2.2	1.8	0.6	3.2	4.3	3.3	5.5	7.8	7.5	8.0	7.3	6.8	7.5	4.9	2.9	4.3	5.3	3.8	5.4	5.6	114.5	4.8
9	4.9	6.7	8.0	6.1	7.0	6.5	2.7	2.0	4.9	8.9	6.3	8.0	6.1	5.3	3.6	5.1	5.4	4.8	5.6	2.7	1.8	9.7	4.6	4.7	131.3	5.5
10	2.3	3.2	3.8	4.0	3.5	5.7	5.5	3.4	1.6	0.8	1.4	2.8	4.7	3.6	5.7	5.9	4.4	5.0	2.4	1.8	2.8	4.7	4.2	5.2	88.1	3.7
11	5.4	6.5	5.7	7.2	7.5	6.0	4.9	5.5	3.7	6.1	6.7	7.4	7.9	6.6	2.8	1.4	1.6	2.5	4.4	4.3	5.9	8.4	8.9	8.1	135.3	5.6
12	8.5	7.8	8.9	8.7	6.9	7.1	4.0	2.6	6.2	9.7	6.7	6.8	10.0	10.2	11.7	13.0	8.7	5.5	2.3	2.7	2.4	2.6	3.2	3.8	160.0	6.7
13	2.9	3.7	3.6	4.4	6.6	7.8	1.9	3.0	4.2	6.4	8.7	8.4	8.9	11.6	6.4	6.5	7.5	8.7	2.9	3.7	3.9	4.8	5.1	1.8	133.3	5.6
14	5.7	6.3	7.4	5.7	2.2	2.9	1.1	1.6	1.8	7.6	5.4	5.8	7.8	8.7	5.0	3.2	2.4	2.6	1.3	0.8	0.1	3.4	4.8	5.1	98.5	4.1
15	4.5	6.5	5.1	5.0	5.2	3.4	2.0	2.7	3.0	4.8	7.6	5.7	8.0	9.8	9.1	9.7	6.4	4.0	2.4	4.6	4.4	5.4	6.3	7.4	132.9	5.5
16	6.8	6.6	7.7	5.9	6.6	6.8	5.0	2.7	3.5	6.1	6.9	6.0	4.8	5.1	6.2	9.6	6.3	3.5	2.2	1.8	1.5	0.6	1.8	1.4	115.4	4.8
17	1.7	1.9	3.0	4.1	4.4	1.9	1.9	2.0	2.8	4.9	5.0	5.8	8.7	5.3	6.0	5.2	3.3	6.5	3.5	1.8	2.5	4.5	4.8	5.0	96.1	4.0
18	6.4	7.9	7.5	4.9	4.6	4.9	3.5	3.6	5.6	7.2	7.7	4.0	6.5	7.2	5.9	8.5	9.8	6.8	4.0	8.1	3.4	3.6	2.2	2.9	136.6	5.7
19	4.1	2.6	1.2	1.4	4.1	2.9	4.0	5.0	6.3	6.5	8.3	9.2	7.9	7.2	5.8	6.2	5.9	6.1	1.9	0.8	2.9	4.9	4.6	4.9	114.7	4.8
20	3.7	4.2	4.0	5.0	8.1	6.1	3.9	3.7	4.5	8.3	6.8	8.9	6.7	6.9	7.0	8.8	7.2	4.1	2.4	5.1	6.7	6.6	8.4	8.8	145.7	6.1
21	6.1	2.9	2.0	1.2	1.6	1.2	2.8	4.9	8.0	8.2	4.3	8.1	11.0	10.6	10.6	7.4	7.8	5.9	2.3	2.6	3.2	4.5	3.6	3.9	124.7	5.2
22	2.7	0.8	3.3	2.0	2.4	0.9	1.3	4.7	5.3	6.1	6.5	5.7	5.9	5.6	9.6	8.3	5.5	2.5	2.7	3.3	6.3	8.5	8.6	6.3	114.7	4.8
23	5.5	4.8	5.9	3.8	2.4	4.9	3.8	3.0	3.6	7.8	6.4	4.2	7.8	7.3	6.1	5.4	4.9	4.0	1.4	2.3	1.6	1.1	1.3	1.2	100.4	4.2
24	2.7	3.3	2.3	3.7	3.8	1.1	1.8	6.3	9.0	9.3	7.5	4.5	6.3	4.2	8.3	9.7	5.3	4.0	4.2	3.3	2.0	1.1	1.8	5.1	110.3	4.6
25	6.2	7.4	5.7	5.7	3.4	2.9	2.1	1.9	4.4	4.9	3.3	4.8	5.3	6.1	4.9	7.6	6.2	5.0	2.6	1.7	1.9	0.7	2.1	4.5	101.3	4.2
26	5.8	7.3	8.6	8.6	6.9	7.4	5.8	4.0	7.2	7.5	6.7	7.4	9.2	8.4	8.2	8.1	7.4	6.3	3.3	3.5	4.9	5.6	6.2	7.4	161.7	6.7
27	8.7	7.7	7.4	8.3	7.4	6.0	0.7	3.2	4.8	5.2	6.8	9.4	9.6	10.6	9.8	9.1	7.5	6.1	3.0	2.0	3.4	3.7	5.1	5.4	150.7	6.3
28	5.4	6.4	7.1	8.0	7.2	7.9	5.0	3.1	2.8	6.5	8.0	8.2	8.4	9.5	8.2	8.3	6.1	4.5	1.1	2.5	3.7	6.6	7.2	7.8	149.5	6.2
29	7.8	6.4	6.4	8.3	8.9	8.1	7.5	3.4	3.7	5.0	7.5	8.1	8.9	6.4	6.6	5.4	4.6	4.0	5.7	6.3	6.8	3.7	4.2	5.1	148.7	6.2
30	7.0	7.1	7.2	5.8	4.9	5.2	4.6	3.6	2.7	6.7	7.4	9.0	6.9	10.0	10.4	8.2	6.6	2.3	2.5	3.1	4.8	6.3	7.1	5.4	144.6	6.0
31	3.3	3.7	1.8	6.6	8.2	6.0	4.0	2.7	5.2	5.8	6.8	6.4	8.1	7.9	7.5	8.5	7.7	3.7	2.1	4.5	6.3	5.0	4.4	4.5	130.5	5.4
<b>Total</b>	<b>162.6</b>	<b>161.6</b>	<b>167.4</b>	<b>162.6</b>	<b>166.9</b>	<b>155.5</b>	<b>107.4</b>	<b>104.1</b>	<b>143.5</b>	<b>192.2</b>	<b>201.9</b>	<b>218.6</b>	<b>237.0</b>	<b>245.0</b>	<b>234.9</b>	<b>225.8</b>	<b>181.3</b>	<b>141.9</b>	<b>85.1</b>	<b>107.8</b>	<b>125.7</b>	<b>151.0</b>	<b>158.6</b>	<b>162.1</b>	<b>4000.2</b>	<b>166.7</b>
<b>Mit</b>	<b>5.2</b>	<b>5.2</b>	<b>5.4</b>	<b>5.2</b>	<b>5.4</b>	<b>5.0</b>	<b>3.5</b>	<b>3.4</b>	<b>4.6</b>	<b>6.2</b>	<b>6.5</b>	<b>7.1</b>	<b>7.6</b>	<b>7.9</b>	<b>7.6</b>	<b>7.3</b>	<b>5.8</b>	<b>4.6</b>	<b>2.7</b>	<b>3.5</b>	<b>4.1</b>	<b>4.9</b>	<b>5.1</b>	<b>5.2</b>	<b>129.0</b>	<b>5.4</b>
<b>Màx.</b>	<b>9.6</b>	<b>8.6</b>	<b>8.9</b>	<b>8.7</b>	<b>9.1</b>	<b>9.7</b>	<b>8.7</b>	<b>6.3</b>	<b>9.0</b>	<b>9.7</b>	<b>10.1</b>	<b>11.0</b>	<b>11.0</b>	<b>11.6</b>	<b>11.7</b>	<b>13.0</b>	<b>9.8</b>	<b>8.7</b>	<b>5.7</b>	<b>8.1</b>	<b>7.4</b>	<b>9.7</b>	<b>8.9</b>	<b>9.4</b>	<b>169.6</b>	<b>7.1</b>
<b>Dia</b>	<b>7</b>	<b>7</b>	<b>12</b>	<b>7</b>	<b>7</b>	<b>3</b>	<b>3</b>	<b>24</b>	<b>24</b>	<b>12</b>	<b>6</b>	<b>5</b>	<b>21</b>	<b>13</b>	<b>12</b>	<b>12</b>	<b>18</b>	<b>13</b>	<b>29</b>	<b>18</b>	<b>2</b>	<b>9</b>	<b>11</b>	<b>6</b>	<b>3</b>	<b>3</b>
<b>Min.</b>	<b>0.5</b>	<b>0.8</b>	<b>1.2</b>	<b>1.2</b>	<b>1.3</b>	<b>0.9</b>	<b>0.6</b>	<b>0.7</b>	<b>1.6</b>	<b>0.8</b>	<b>1.4</b>	<b>2.8</b>	<b>4.7</b>	<b>3.6</b>	<b>2.8</b>	<b>1.4</b>	<b>1.6</b>	<b>1.4</b>	<b>1.1</b>	<b>0.8</b>	<b>0.1</b>	<b>0.6</b>	<b>0.2</b>	<b>1.0</b>	<b>72.2</b>	<b>3.0</b>
<b>Dia</b>	<b>2</b>	<b>22</b>	<b>19</b>	<b>21</b>	<b>1</b>	<b>22</b>	<b>8</b>	<b>2</b>	<b>10</b>	<b>10</b>	<b>10</b>	<b>10</b>	<b>10</b>	<b>10</b>	<b>11</b>	<b>11</b>	<b>11</b>	<b>7</b>	<b>28</b>	<b>14</b>	<b>14</b>	<b>16</b>	<b>1</b>	<b>1</b>	<b>1</b>	<b>1</b>

# OBSERVATORI METEOROLÒGIC

## DE ARBÚCIES

Coordenades UTM  
X=458565.7  
Y=4629695.7  
Fus=31



## RESUM DE TEMPERATURES PRESSIÓ HUMITAT PLUJA Evaporació

MES DE  
MAIG

ANY  
2021



[meteoguilleries.cat](http://meteoguilleries.cat)

[info@meteoguilleries.cat](mailto:info@meteoguilleries.cat)

[www.meteoguilleries.cat](http://www.meteoguilleries.cat)

### TEMPERATURES

Dia	Màxima	Mínima	Oscil·lació	Mitjana
1	13.0°	10.1°	2.9°	11.3°
2	14.4°	5.4°	9.0°	10.5°
3	18.1°	4.3°	13.8°	11.3°
4	21.6°	6.0°	15.6°	14.3°
5	21.0°	8.6°	12.4°	14.2°
6	26.5°	7.6°	18.9°	16.5°
7	20.4°	10.8°	9.6°	15.2°
8	28.8°	9.4°	19.4°	18.1°
9	23.0°	9.2°	13.8°	17.1°
10	20.1°	10.6°	9.5°	14.5°

Suma	206.9°	82.0°	124.9°	143.0°
------	--------	-------	--------	--------

11	19.0°	5.9°	13.1°	11.9°
12	22.1°	5.5°	16.6°	13.9°
13	21.0°	7.6°	13.4°	14.3°
14	18.9°	9.0°	9.9°	12.8°
15	26.4°	7.1°	19.3°	15.6°
16	23.0°	11.1°	11.9°	16.4°
17	19.7°	9.4°	10.3°	14.5°
18	23.8°	8.9°	14.9°	16.2°
19	20.3°	11.2°	9.1°	14.6°
20	21.7°	9.1°	12.6°	15.0°

Suma	215.9°	84.8°	131.1°	145.2°
------	--------	-------	--------	--------

21	25.6°	9.5°	16.1°	17.1°
22	23.4°	9.8°	13.6°	15.9°
23	18.8°	8.2°	10.6°	13.7°
24	23.9°	10.6°	13.3°	15.8°
25	20.5°	9.4°	11.1°	13.8°
26	21.4°	7.6°	13.8°	15.2°
27	25.4°	10.9°	14.5°	18.1°
28	25.7°	13.0°	12.7°	19.2°
29	29.0°	13.6°	15.4°	20.5°
30	26.0°	14.1°	11.9°	18.6°
31	24.3°	12.2°	12.1°	18.3°

Suma	264.0°	118.9°	145.1°	186.2°
------	--------	--------	--------	--------

Total	686.8°	285.7°	401.1°	474.4°
-------	--------	--------	--------	--------

Mit	22.2°	9.2°	12.9°	15.3°
-----	-------	------	-------	-------

### TEMPERATURA AMBIENT A: °C

00:00 am	04:00 am	08:00 am	12:00 am	16:00 pm	20:00 pm
11.4°	10.4°	11.3°	12.5°	11.8°	10.3°
9.7°	8.6°	13.1°	13.4°	11.0°	7.1°
5.5°	8.1°	17.0°	16.9°	13.4°	7.0°
8.1°	11.9°	19.8°	20.4°	15.4°	10.4°
9.5°	12.4°	19.3°	18.2°	15.6°	10.2°
8.5°	10.7°	21.4°	25.8°	19.6°	13.0°
11.6°	14.5°	19.5°	17.4°	15.9°	12.0°
10.1°	12.9°	23.9°	26.9°	21.6°	13.1°
10.9°	12.3°	20.3°	21.4°	19.9°	17.6°
13.6°	12.8°	15.5°	17.2°	16.2°	11.8°

98.8°	114.7°	180.9°	190.0°	160.3°	112.6°
-------	--------	--------	--------	--------	--------

12.2°	11.8°	17.1°	12.7°	11.0°	6.7°
5.9°	8.8°	18.4°	21.3°	17.7°	11.2°
8.6°	9.5°	16.6°	19.3°	18.0°	13.7°
10.7°	11.6°	15.3°	16.2°	12.4°	10.6°
7.9°	8.9°	18.1°	25.4°	19.9°	13.4°
11.5°	13.2°	20.4°	21.9°	17.3°	14.2°
11.7°	13.3°	17.0°	18.3°	15.4°	11.2°
9.5°	11.1°	18.6°	22.2°	20.6°	15.4°
13.7°	13.0°	18.5°	17.1°	13.3°	12.1°
10.7°	11.9°	17.7°	20.3°	17.8°	11.8°

102.3°	113.1°	177.6°	194.7°	163.4°	120.4°
--------	--------	--------	--------	--------	--------

9.9°	12.6°	22.7°	24.0°	19.4°	14.3°
14.2°	13.8°	18.8°	21.3°	15.9°	11.1°
9.3°	11.2°	17.0°	17.6°	14.8°	12.3°
11.2°	12.5°	19.7°	22.0°	16.1°	13.5°
10.4°	12.2°	15.6°	18.8°	13.9°	12.1°
9.3°	12.0°	19.2°	20.7°	17.7°	12.7°
11.8°	15.3°	22.9°	23.4°	19.6°	15.7°
13.8°	15.8°	24.0°	24.4°	21.6°	15.7°
14.4°	17.8°	27.0°	27.0°	20.4°	16.4°
15.2°	16.2°	23.2°	24.7°	17.4°	15.1°
13.9°	15.9°	22.5°	23.3°	20.2°	14.0°

133.2°	155.1°	232.5°	247.3°	197.1°	152.9°
--------	--------	--------	--------	--------	--------

334.3°	383.0°	591.1°	632.1°	520.8°	385.9°
--------	--------	--------	--------	--------	--------

10.8°	12.4°	19.1°	20.4°	16.8°	12.4°
-------	-------	-------	-------	-------	-------

### PRESSIÓ

### HUMITAT

### PLUJA

Mitjana HPA	Mitjana %	LITRES m2
1011.6	93.1	21.8
1019.7	79.6	0.0
1021.8	65.3	0.0
1017.2	61.6	0.0
1016.4	71.5	0.0
1015.7	66.0	0.0
1018.4	77.6	0.8
1017.2	64.9	0.0
1010.8	68.9	0.9
1009.3	87.1	4.8

10158.2	735.7	28.3 -
---------	-------	--------

1014.3	73.4	4.7
1014.5	61.5	0.1
1012.6	63.5	0.0
1014.2	80.8	3.3
1013.1	67.5	0.1
1012.0	68.0	0.0
1018.1	74.8	0.0
1018.3	69.3	0.0
1022.1	75.4	0.1
1023.0	71.9	0.0

10162.2	706.1	8.3 -
---------	-------	-------

1015.5	66.7	0.0
1015.4	65.2	0.0
1018.7	68.8	0.0
1018.6	68.3	0.0
1024.9	72.0	0.0
1020.9	66.3	0.0
1018.3	66.7	0.0
1018.4	60.3	0.0
1019.5	61.2	1.8
1019.5	73.1	9.8
1017.4	71.2	0.0

11207.3	739.7	11.6 -
---------	-------	--------

31527.6	2181.4	48.2 -
---------	--------	--------

1017.0	70.4	1.6
--------	------	-----

**OBSERVATORI  
METEOROLÒGIC**

**DE**

**ARBÚCIES**

Coordenades UTM

X=458565.7

Y=4629695.7

Fus=31



**RADIACIÓ  
SOLAR  
WM2**

MES DE  
**MAIG**

ANY  
**2021**



meteoguilleries.cat

info@meteoguilleries.cat

www.meteoguilleries.cat

Dia	0:00	1:00	2:00	3:00	4:00	5:00	6:00	7:00	8:00	9:00	10:00	11:00	12:00	13:00	14:00	15:00	16:00	17:00	18:00	19:00	20:00	21:00	22:00	23:00	Total	Mit	
1			0.1	0.2	0.1	5.7	22.0	45.7	62.0	106.5	157.6	204.0	326.5	328.0	267.0	199.9	116.3	44.6	13.7	0.1	0.1				1899.9	100.0	
2					1.0	48.3	151.5	201.6	389.4	432.5	290.5	224.7	390.2	802.7	572.5	154.4	59.6	60.2	10.8							3789.8	252.7
3					1.0	73.1	265.2	442.0	633.7	810.2	954.6	792.9	869.5	819.1	552.1	524.3	321.2	94.5	20.7							7174.2	478.3
4					0.6	73.8	261.1	465.7	559.6	768.4	850.4	767.9	765.2	681.9	751.9	525.8	116.1	69.8	16.3						0.0	6674.5	417.2
5					0.9	61.0	252.0	448.0	629.2	790.3	922.5	788.8	679.0	882.4	695.2	384.3	218.6	71.6	9.6							6833.4	455.6
6					1.6	76.1	244.1	456.8	626.0	789.9	899.5	960.4	949.8	878.7	767.8	601.2	215.3	78.8	17.1							7563.1	504.2
7					2.2	82.2	260.6	436.6	595.5	724.5	709.6	454.1	427.9	214.5	199.6	156.2	78.4	43.9	14.6	0.1						4400.3	275.0
8					2.3	79.4	266.8	462.6	633.1	787.5	891.1	940.5	944.5	869.9	757.7	557.8	376.8	74.7	16.3	0.0						7661.0	478.8
9					2.1	70.0	140.7	396.9	644.7	798.1	639.8	677.5	394.0	257.0	452.7	482.8	327.6	89.4	18.6	0.0	0.0	0.1	0.0	1.1	5393.1	269.7	
10					1.2	27.5	58.4	55.9	120.0	184.2	134.3	164.0	166.7	500.7	544.7	394.6	136.3	79.5	12.7	0.1				0.0	2580.7	151.8	
11	0.0				4.6	114.8	135.2	151.3	244.3	660.1	774.9	677.9	394.4	87.0	316.4	227.9	372.3	86.1	22.2	0.1						4269.5	251.1
12					2.1	85.5	282.3	379.0	672.1	830.5	726.5	721.9	943.8	854.6	731.7	629.9	375.3	101.8	30.6	0.1						7367.7	460.5
13					3.1	33.5	109.5	217.1	554.6	686.9	849.3	877.8	834.5	908.5	509.0	446.4	179.7	94.0	20.4	0.4						6324.7	395.3
14					1.3	29.8	56.7	68.3	423.7	807.6	832.4	844.2	574.3	667.6	161.0	58.7	37.3	95.5	27.2	0.9						4686.5	292.9
15					5.5	80.0	97.1	115.2	464.9	645.8	808.6	793.6	777.6	841.5	761.4	455.7	237.6	119.7	31.3	0.5						6235.6	389.7
16					3.0	36.3	106.1	229.8	533.4	623.1	873.0	406.8	336.7	534.6	395.4	281.5	228.5	61.5	19.9	0.2	0.0					4669.9	274.7
17					2.9	22.0	44.9	196.9	250.9	401.4	425.7	574.5	694.8	844.5	681.7	407.8	171.8	83.5	29.7	0.5						4833.2	302.1
18					5.9	90.5	98.1	452.9	567.5	453.6	479.7	502.0	542.2	747.2	700.5	486.4	391.3	102.1	32.8	0.3			0.1	0.8	5653.8	314.1	
19	0.0				2.0	20.7	208.1	467.5	706.3	781.4	827.2	770.9	521.3	316.5	86.2	40.7	23.0	36.3	12.9	0.9	0.1	0.2	0.1	0.0	4822.4	229.6	
20					3.0	87.4	175.4	201.5	628.0	707.8	852.2	993.0	909.1	755.8	774.9	558.0	302.8	110.6	33.1	0.7						7093.5	443.3
21					4.8	69.1	262.5	401.9	534.4	742.8	603.0	894.8	966.2	887.8	752.8	593.0	376.0	112.4	25.1	1.8			0.1	0.1	7228.5	401.6	
22					4.2	51.5	109.5	188.7	390.6	412.8	638.6	666.0	930.4	856.1	508.2	296.6	112.8	68.8	55.9	1.8						5292.5	330.8
23			0.0		7.4	79.1	145.3	333.5	388.1	335.9	442.4	488.5	406.2	222.4	174.0	116.6	72.1	55.5	17.1	0.9						3284.8	193.2
24					2.2	36.7	176.0	460.5	691.9	829.4	642.0	850.9	767.2	414.5	477.9	228.6	63.8	69.5	10.7	0.5						5722.4	357.6
25					1.6	13.0	63.3	134.4	102.4	419.1	350.3	545.3	668.5	771.6	291.8	137.4	32.7	6.0	5.6	0.7						3543.6	221.5
26					7.6	110.5	300.5	470.2	639.7	601.2	697.0	838.2	831.7	548.4	616.6	456.0	354.9	115.4	42.9	1.0		0.1				6631.6	390.1
27					7.3	112.2	303.4	477.7	668.8	829.7	929.4	886.9	972.9	877.9	753.7	462.2	331.6	148.2	48.8	1.8						7812.5	488.3
28					5.7	54.2	175.3	276.4	546.7	828.9	965.2	893.1	620.1	909.1	668.1	377.7	147.2	137.0	44.7	1.0						6650.4	415.7
29					15.7	83.7	267.0	470.8	674.6	799.0	917.5	933.4	1001.4	573.1	272.5	318.3	152.8	109.0	30.9	1.4	0.0	0.5	1.1		6622.8	348.6	
30	0.1	1.1	1.9	0.7	9.5	21.6	108.0	248.2	446.1	581.9	834.5	994.3	903.1	918.0	449.6	132.7	19.0	18.7	4.0	0.1		0.4	1.1	0.7	5695.1	247.6	
31	0.0	0.0	0.2		10.8	124.2	310.8	398.9	431.0	791.0	793.0	896.4	713.1	652.9	570.1	567.9	365.8	134.0	47.2	4.0						6811.5	358.5

<b>Total</b>	0.2	1.1	2.2	0.9	123.2	1953.6	5457.2	9752.2	15453.1	19961.9	21712.1	22025.0	21222.6	20424.4	16214.8	11261.3	6314.4	2572.5	743.3	19.7	0.3	1.3	2.6	2.7	17522.4	10490.0
--------------	-----	-----	-----	-----	-------	--------	--------	--------	---------	---------	---------	---------	---------	---------	---------	---------	--------	--------	-------	------	-----	-----	-----	-----	---------	---------

<b>Mit</b>	0.0	0.5	0.5	0.4	4.0	63.0	176.0	314.6	498.5	643.9	700.4	710.5	684.6	658.9	523.1	363.3	203.7	83.0	24.0	0.8	0.1	0.3	0.4	0.4	5652.3	338.4
------------	-----	-----	-----	-----	-----	------	-------	-------	-------	-------	-------	-------	-------	-------	-------	-------	-------	------	------	-----	-----	-----	-----	-----	--------	-------

<b>Màx.</b>	0.1	1.1	1.9	0.7	15.7	124.2	310.8	477.7	706.3	830.5	965.2	994.3	1001.4	918.0	774.9	629.9	391.3	148.2	55.9	4.0	0.1	0.5	1.1	1.1	7812.5	504.2
-------------	-----	-----	-----	-----	------	-------	-------	-------	-------	-------	-------	-------	--------	-------	-------	-------	-------	-------	------	-----	-----	-----	-----	-----	--------	-------

<b>Dia</b>	30	30	30	30	29	31	31	27	19	12	28	30	29	30	20	12	18	27	22	31	1	29	29	9	27	6
------------	----	----	----	----	----	----	----	----	----	----	----	----	----	----	----	----	----	----	----	----	---	----	----	---	----	---

<b>Min.</b>	0.0	0.0	0.0	0.2	0.1	5.7	22.0	45.7	62.0	106.5	134.3	164.0	166.7	87.0	86.2	40.7	19.0	6.0	4.0	0.0	0.0	0.1	0.0	0.0	1899.9	100.0
-------------	-----	-----	-----	-----	-----	-----	------	------	------	-------	-------	-------	-------	------	------	------	------	-----	-----	-----	-----	-----	-----	-----	--------	-------

<b>Dia</b>	19	31	23	1	1	1	1	1	1	1	10	10	10	11	19	19	30	25	30	9	16	26	9	19	1	1
------------	----	----	----	---	---	---	---	---	---	---	----	----	----	----	----	----	----	----	----	---	----	----	---	----	---	---